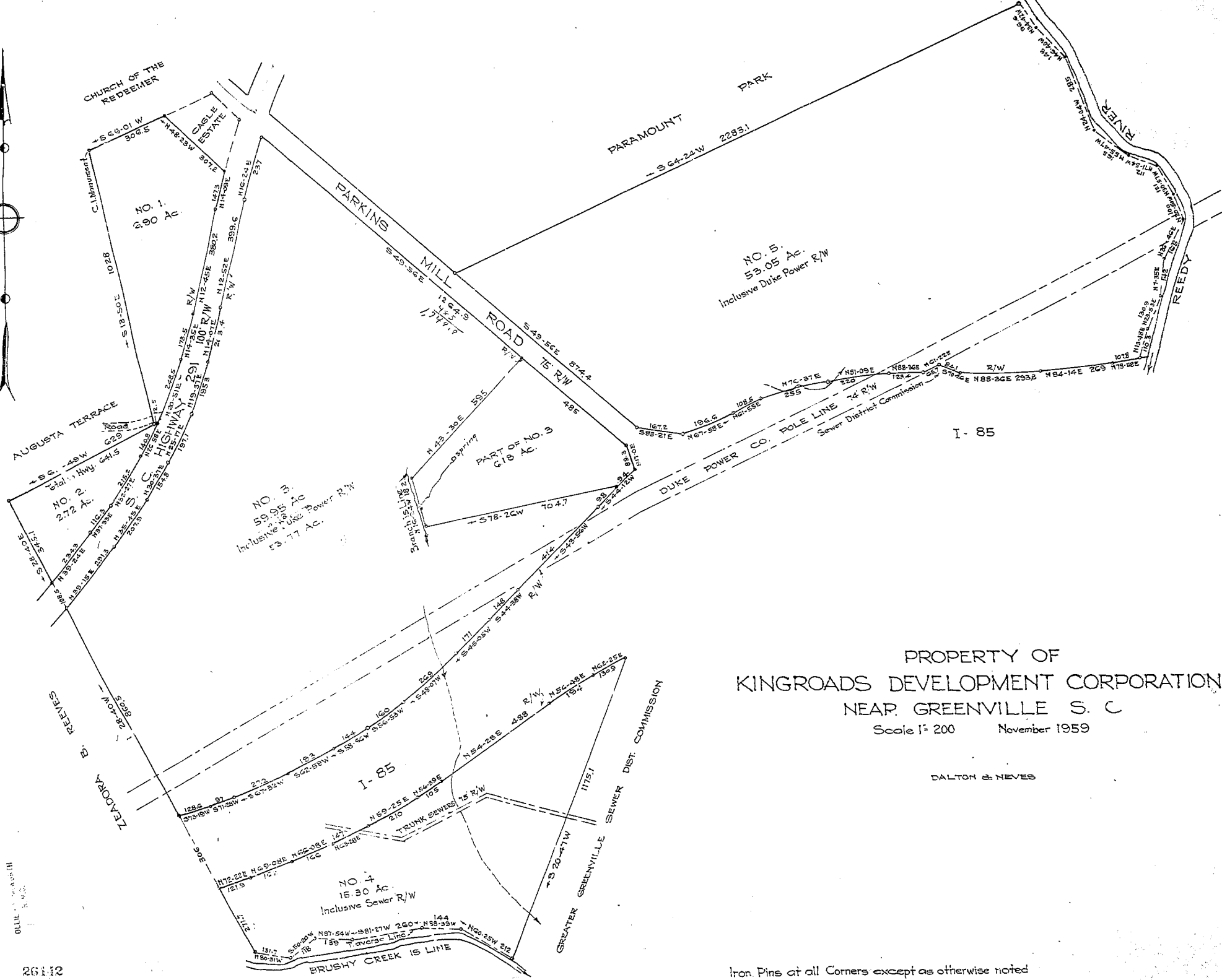


FILED  
and Recorded in Vol. 10, Page 133



PROPERTY OF  
KINGROADS DEVELOPMENT CORPORATION  
NEAR GREENVILLE S. C.  
Scale 1" = 200' November 1959

DALTON & NEVES

FILED  
GREENVILLE S.C.  
MAY 25 9 AM 1960  
O.L.H. [unclear]

26112

Iron Pins at all Corners except as otherwise noted  
Revision of No. 3 March, 1960