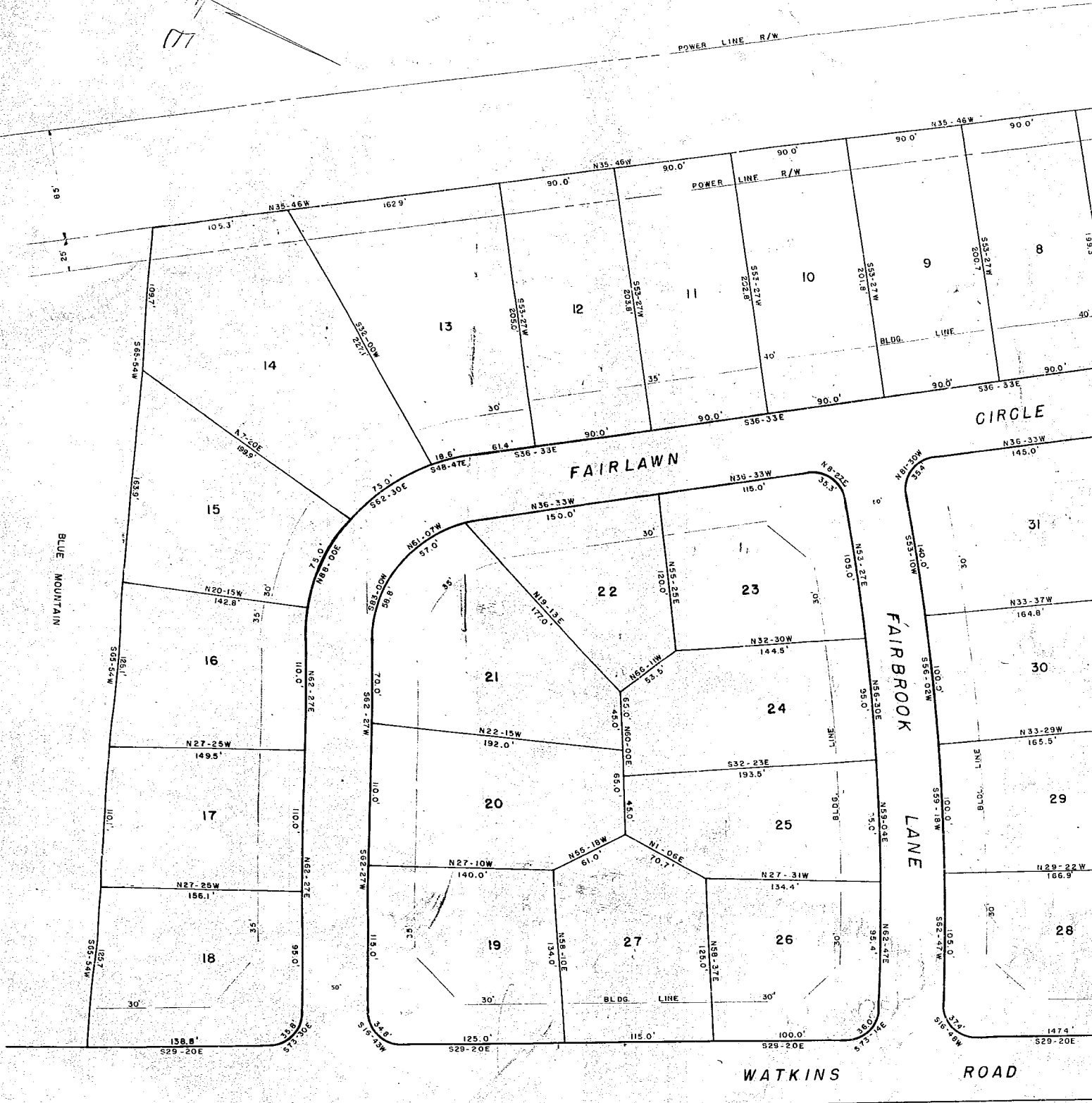


GREENVILLE
MAR 19, 3 26 PM 1959
OLLE E. ...



SECTION TWO
FENWICK HEIGHTS
NEAR GREENVILLE, S.C.

SCALE 1" = 50'

MARCH, 1959

PIEDMONT ENGINEERING SERVICE

ch





This plat filed this 19 day of March 1959
 and recorded in 2nd District Page 115 of 115
 Registrar Meade Cunningham, Chester County, S. C.

NOTE —
 THERE IS A 5' DRAINAGE AND UTILITY EASEMENT
 ALONG ALL SIDE AND REAR LOT LINES.
 IRON PINS AT ALL CORNERS.

SECTION TWO
 WICK HEIGHTS
 NEAR GREENVILLE, S.C.

MARCH, 1959

MAR 19 1959

24186

100

100-45