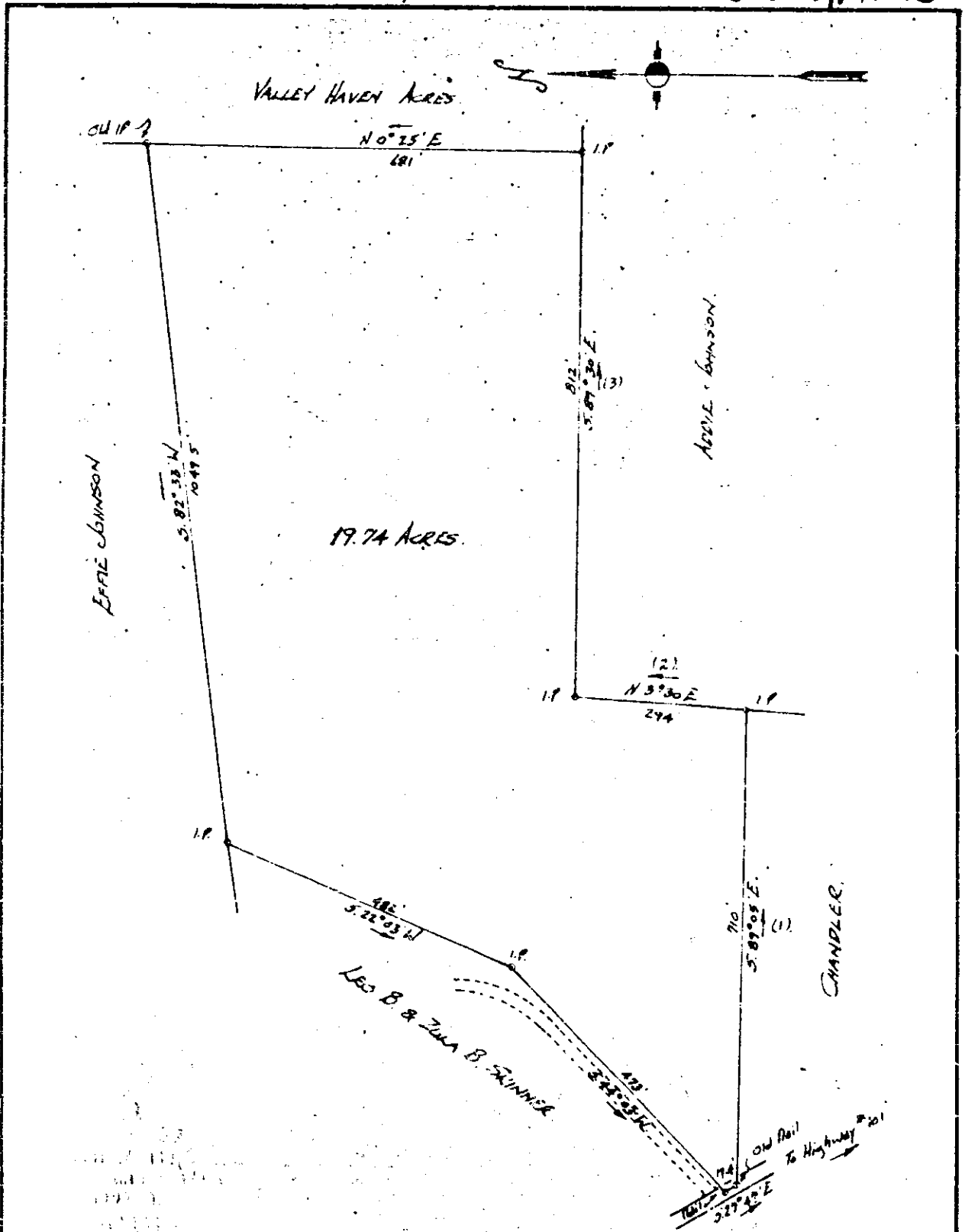


Blk. 00 Pg. 523



PROPERTY OF
W. DENNIS SMITH.

Located approx 3 miles N.W. of Greer
ONEAL TOWNSHIP GREENVILLE COUNTY
SOUTH CAROLINA.

SCALE: 1" = 200 FEET
Aug. 9, 1960.
Part survey made Aug 9, 1960

100
SEP 2 1960

Note: Lines 1 thru 3 shown above, not surveyed
0°45' variation applied to close traverse.

John A. Simmons Reg. Surveyor #2312
GREER, S.C.

Recorded September 2nd, 1960 at 4:16 P.M. # 6418

SEP 2 4 16 PM 1960
OFFICE OF THE CLERK OF COURTS
GREENVILLE, S.C.