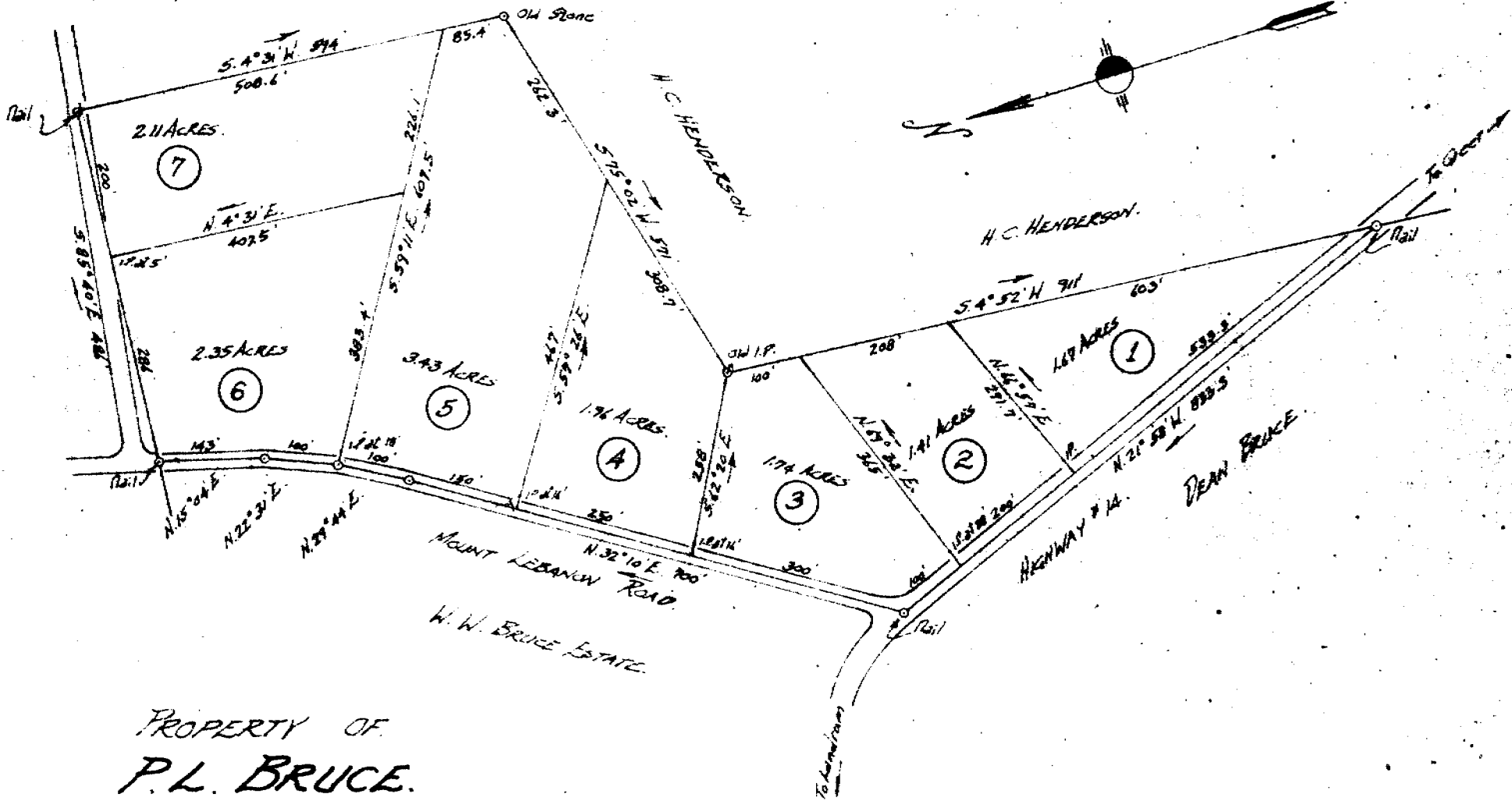


Recorded July 12, 1960 at 4:26 P. M. #1514



PROPERTY OF
P. L. BRUCE.

located about 6 miles North of Greer, S.C.
ONEAL TOWNSHIP GREENVILLE COUNTY.
SOUTH CAROLINA.

SCALE: 1" = 200 FEET
Subdivided on July 24, 1959.
Aug 1959

1514 JUL 12 1960

H.S. BROCKMAN, Reg. Surveyor #159
CONN. A. SIMMONS, " " #2212
GREER, S.C.

137