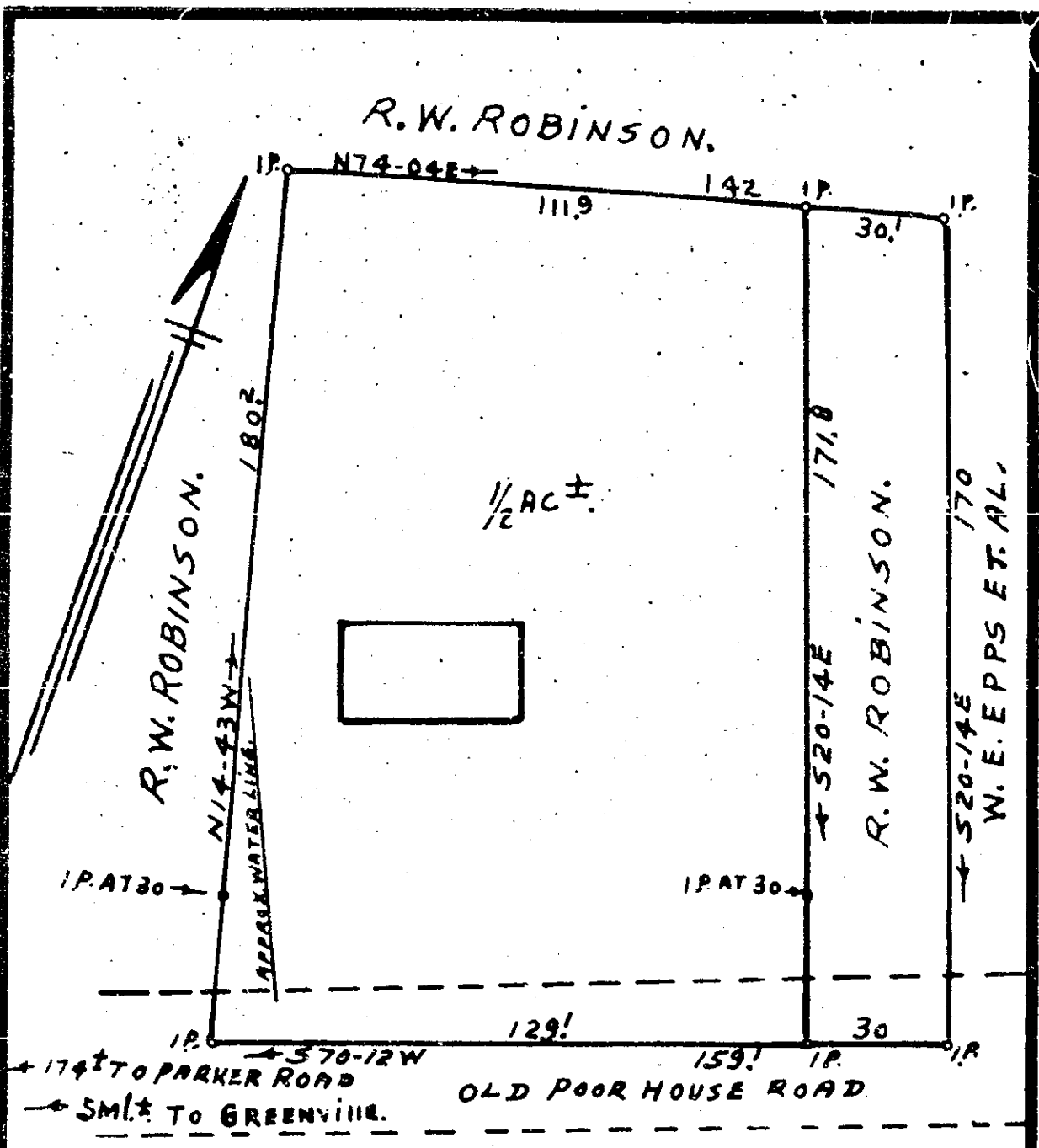


F-1-167 ③



MAY 27 1960

32491

## LAND SURVEY FOR R.W. ROBINSON, GREENVILLE, CO. S.C.

PROPOSED PART TO  
BOBBIE SUE COLLINS, 11-18-1958, 1" = 30',  
IS PART OF DEEDS, BK. 457-PG. 208 (VOL. 363-PG. 278).

J. Q. BRUCE REG. SUR.  
R-2, CAMPBELL, S.C.

MAY 27 10 02 AM 1960  
GREENVILLE, S.C.  
FILED

Photo Plat 100