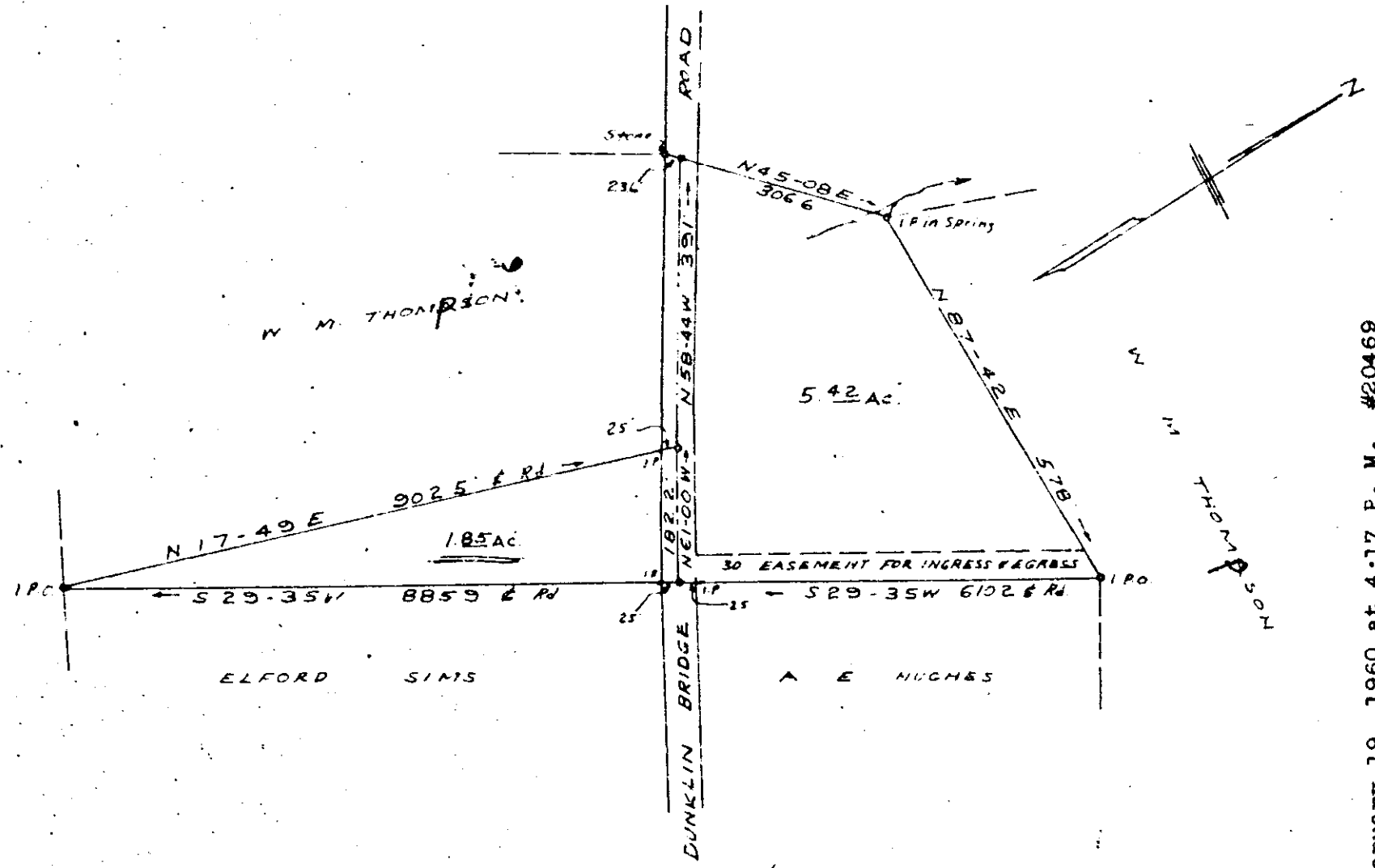


# Plat Book 00, Page 420



C. O. Riddle, Reg. L.S. #1347

JAN 19 4 17 PM 1960  
 OLLIE PA. NEWERTHE  
 R. M. D.

40-570-2-13

Field book D 59

PROPERTY OF  
**W. M. THOMPSON**  
 GREENVILLE CO. S.C.

SCALE 1" = 2.00' OCT. 8, 1959

C. O. Riddle, Reg. L.S. #1347

Recorded January 19, 1960 at 4:17 P. M. #20469

20469 JAN 19 1960