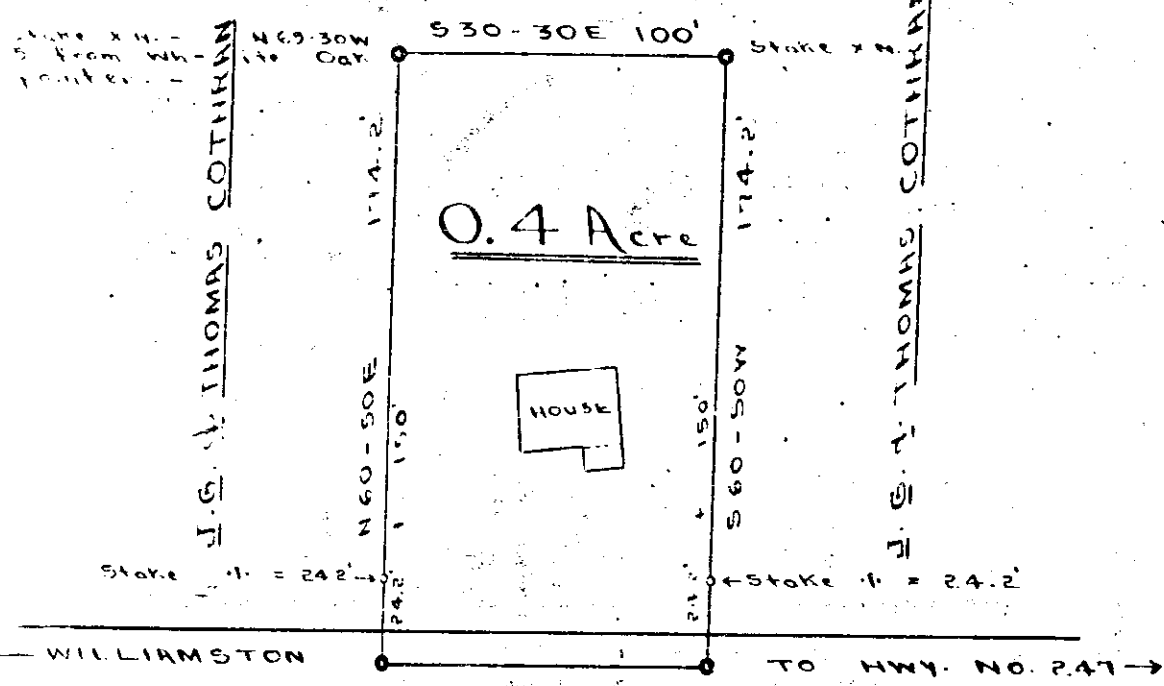


SCALE: 1" = 50'

OCT 31 11 01 AM 1959  
 GREENVILLE CO. S. C.  
 OLLE F. E. R. NORTH  
 OCT 31 1959

J. G. & THOMAS COTHRAN

13214



N30-30W 100'

Stake #1 = 24.2'

Stake #2 = 24.2'

Stake #3 = 24.2'

Stake #4 = 24.2'

Stake #5 = 24.2'

Stake #6 = 24.2'

Stake #7 = 24.2'

Stake #8 = 24.2'

Stake #9 = 24.2'

Stake #10 = 24.2'

Stake #11 = 24.2'

Stake #12 = 24.2'

Stake #13 = 24.2'

Stake #14 = 24.2'

Stake #15 = 24.2'

Stake #16 = 24.2'

Stake #17 = 24.2'

Stake #18 = 24.2'

Stake #19 = 24.2'

Stake #20 = 24.2'

Stake #21 = 24.2'

Stake #22 = 24.2'

Stake #23 = 24.2'

Stake #24 = 24.2'

Stake #25 = 24.2'

Stake #26 = 24.2'

Stake #27 = 24.2'

Stake #28 = 24.2'

Stake #29 = 24.2'

Stake #30 = 24.2'

Stake #31 = 24.2'

Stake #32 = 24.2'

Stake #33 = 24.2'

Stake #34 = 24.2'

Stake #35 = 24.2'

Stake #36 = 24.2'

Stake #37 = 24.2'

Stake #38 = 24.2'

Stake #39 = 24.2'

Stake #40 = 24.2'

Stake #41 = 24.2'

Stake #42 = 24.2'

Stake #43 = 24.2'

Stake #44 = 24.2'

Stake #45 = 24.2'

Stake #46 = 24.2'

Stake #47 = 24.2'

Stake #48 = 24.2'

Stake #49 = 24.2'

Stake #50 = 24.2'

Stake #51 = 24.2'

Stake #52 = 24.2'

Stake #53 = 24.2'

Stake #54 = 24.2'

Stake #55 = 24.2'

Stake #56 = 24.2'

Stake #57 = 24.2'

Stake #58 = 24.2'

Stake #59 = 24.2'

Stake #60 = 24.2'

Stake #61 = 24.2'

Stake #62 = 24.2'

Stake #63 = 24.2'

Stake #64 = 24.2'

Stake #65 = 24.2'

Stake #66 = 24.2'

Stake #67 = 24.2'

Stake #68 = 24.2'

Stake #69 = 24.2'

Stake #70 = 24.2'

Stake #71 = 24.2'

Stake #72 = 24.2'

Stake #73 = 24.2'

Stake #74 = 24.2'

Stake #75 = 24.2'

Stake #76 = 24.2'

Stake #77 = 24.2'

Stake #78 = 24.2'

Stake #79 = 24.2'

Stake #80 = 24.2'

Stake #81 = 24.2'

Stake #82 = 24.2'

Stake #83 = 24.2'

Stake #84 = 24.2'

Stake #85 = 24.2'

Stake #86 = 24.2'

Stake #87 = 24.2'

Stake #88 = 24.2'

Stake #89 = 24.2'

Stake #90 = 24.2'

Stake #91 = 24.2'

Stake #92 = 24.2'

Stake #93 = 24.2'

Stake #94 = 24.2'

Stake #95 = 24.2'

Stake #96 = 24.2'

Stake #97 = 24.2'

Stake #98 = 24.2'

Stake #99 = 24.2'

Stake #100 = 24.2'

South Carolina  
 Greenville County

Lot of land located in state and county aforesaid; in school district 1C, West Dunklin Township; and being a short distance North west of Highway No. 247. - Said lot fronts on the Old Beach Springs Road and contains four-tenths (0.4) Acre, more or less, and conveyed to Harold B. and Sarah D. Smith from J. G. and Thomas Cotheran.

100  
 Picture  
 T. J. Leslie, Reg. Surveyor  
 O. F. E. R.  
 Recorded October 31, 1959 at 11:01 A. M. #13214  
 July 5, 1951