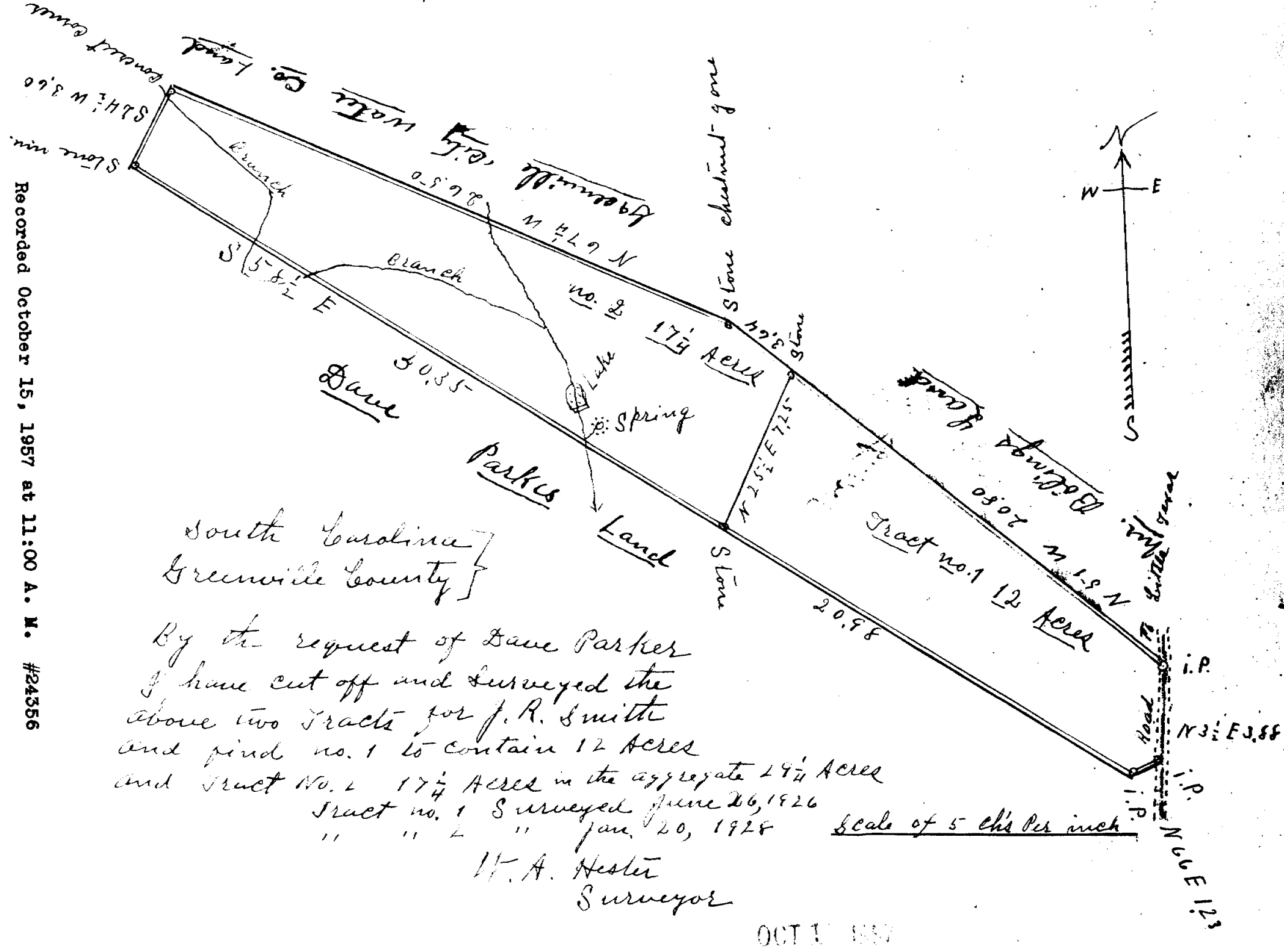


Recorded October 15, 1957 at 11:00 A. M. #24356



South Carolina  
Greenville County

By the request of Dave Parker  
I have cut off and surveyed the  
above two tracts for J. R. Smith  
and find no. 1 to contain 12 Acres  
and Tract No. 2 17 1/4 Acres in the aggregate 29 1/4 Acres

Tract no. 1 Surveyed June 26, 1926  
" " " " Jan. 20, 1928

W. A. Hester  
Surveyor

Scale of 5 chs per inch

OCT 15 1957

24356