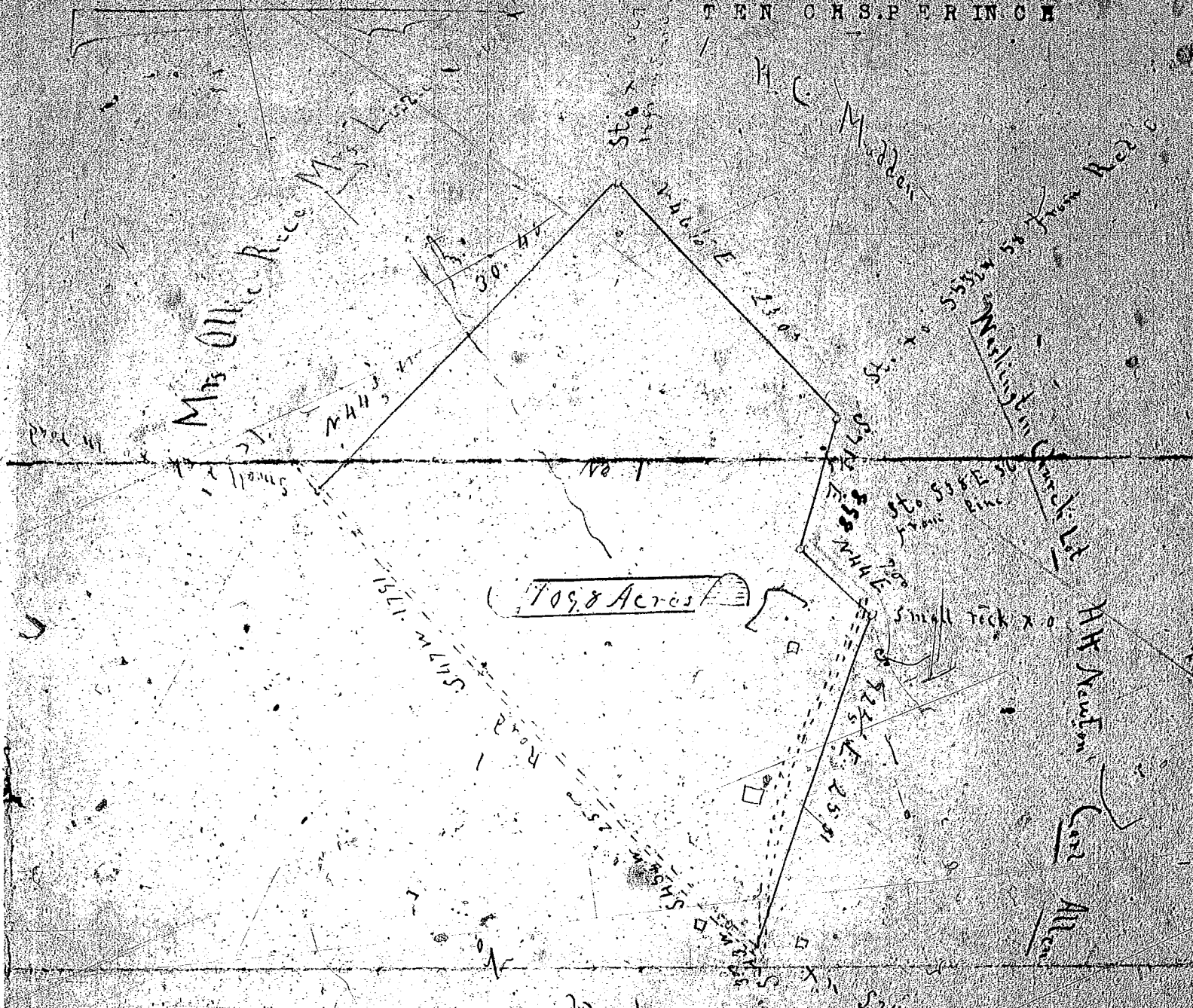


TEN CHS PER INCH



SOUTH CAROLINA,
 GREENVILLE COUNTY. The above plat represents
 tract No. 1, of lands belong-
 ing to The First Carolinas Joint Stock Land Bank, containing
 one hundred and nine and eight-tenths acres, situated in Green-
 ville county, state aforesaid, on a branch tributary to Grove
 creek, waters of Saluda river. Being a portion of the McDavid
 tract of land.

Surveyed August 18-1932

W. L. McCall

State Registered Surveyor,
 Jones Path, S.C.