

FILED  
GREENVILLE CO. S. C.

FEB 16 3 15 PM 1960

OLLIE FARMWORTH  
R. M. C.

FEB 16 1960

22966

SECTION NO. 1.

PINE VALLEY ESTATES

MAULDIN S. C.

Scale 1"=100' Feb. 1960

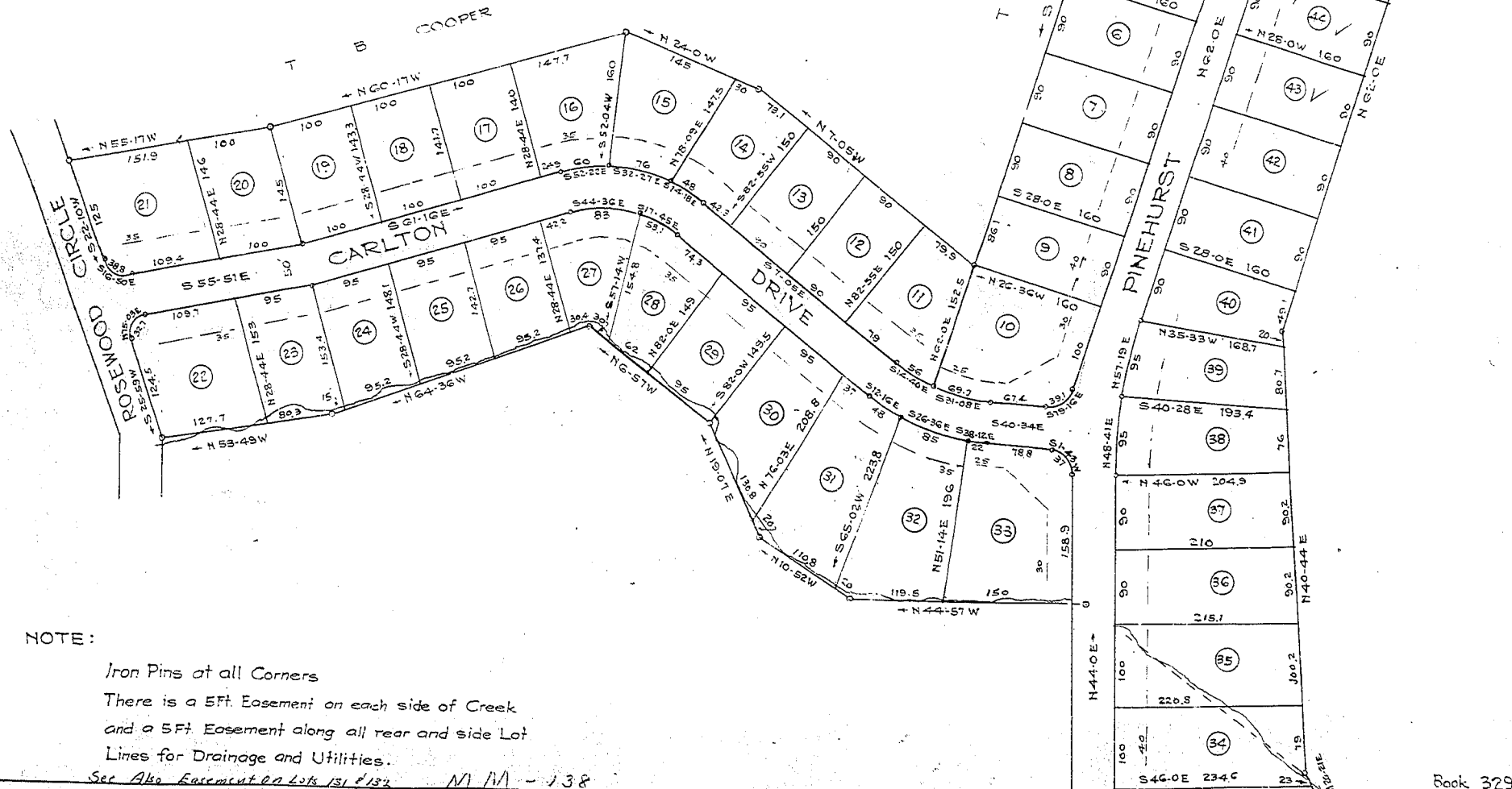
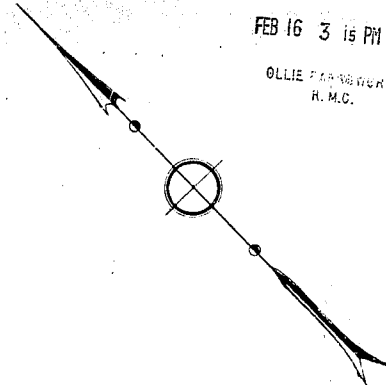
WILLIAM L. COSTNER, DEVELOPER.

DALTON & NEVES

FILED  
GREENVILLE CO. S. C.

FEB 16 3 15 PM 1960

OLLIE FARMWORTH  
R. M. C.



NOTE:

- Iron Pins at all Corners
- There is a 5ft. Easement on each side of Creek
- and a 5ft. Easement along all rear and side Lot
- Lines for Drainage and Utilities.

See Also Easement on Lots 131 & 132 M/M - 138