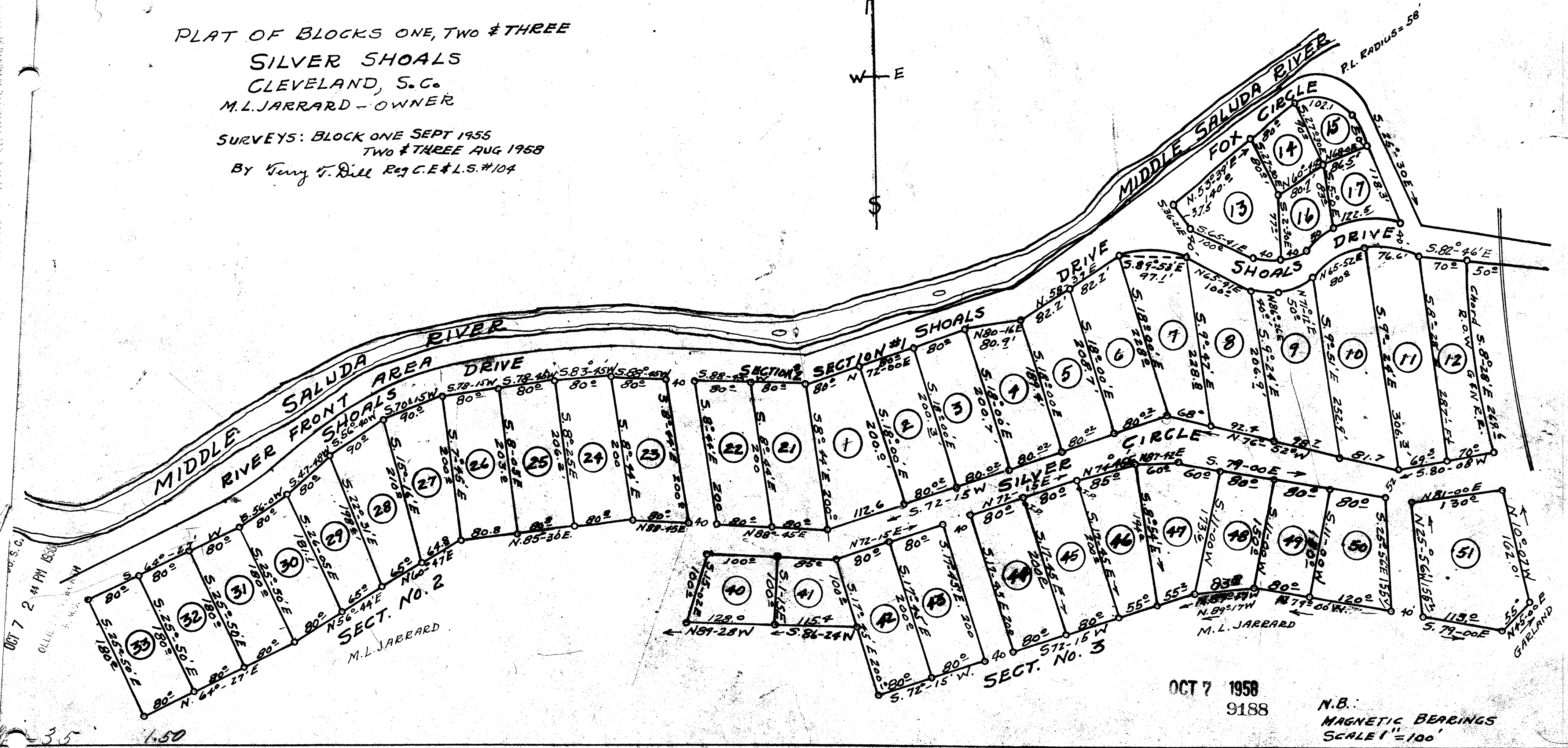
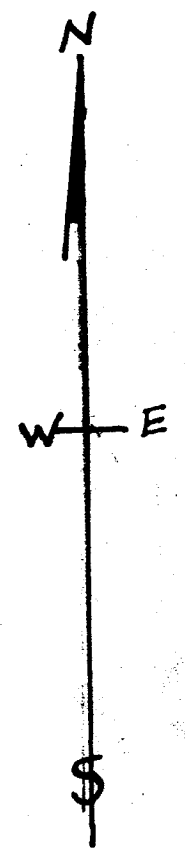


PLAT OF BLOCKS ONE, TWO & THREE
SILVER SHOALS
CLEVELAND, S.C.
M.L. JARRARD - OWNER

SURVEYS: BLOCK ONE SEPT 1955
TWO & THREE AUG 1958
BY Terry F. Dill Reg. C.E. & L.S. #104



OCT 7 1958
9188

N.B.:
MAGNETIC BEARINGS
SCALE 1" = 100'

9188 Filed This 7th day of Oct 58
And Recorded in Vol. W.W. 39
Celia Farnsworth
Register Mesne Conveyance...