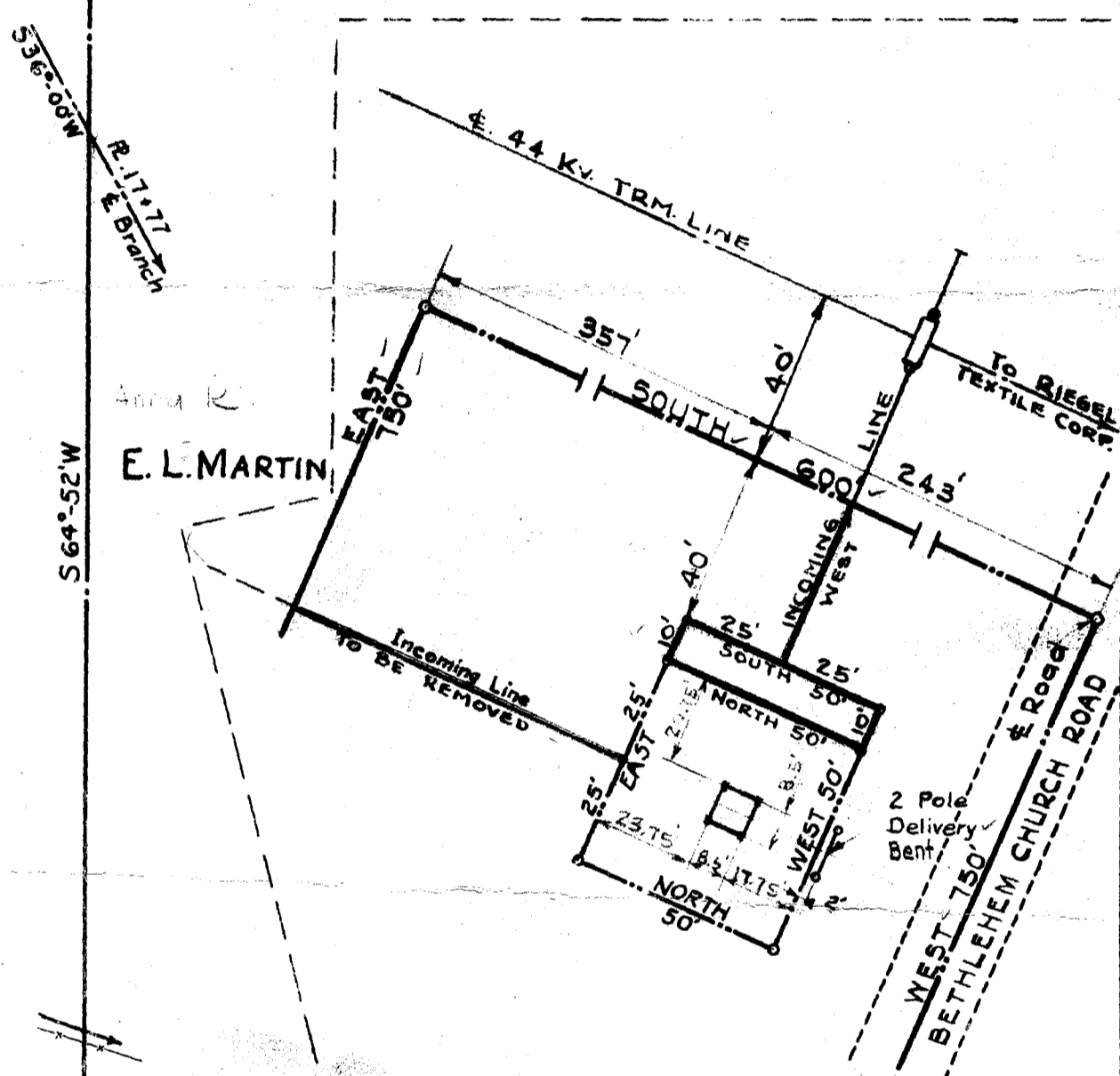


S. C. GAULT

MRS. MONTEZ L. HARRIS
MINNIE O. LENHARDT



DETAILS OF SUBSTATION LOT
SCALE: 1"=40'

Note: Revised Oct. 30, 1942

NOTE:
SUBSTA. LOT REVISED 5-13-58

E. L. MARTIN

Note: For details of Substation Lot see sketch above.

For line to Riegel Textile Corp. at Fork Mills S.C. See Dwg. # 101-36, 2-24-49

DUKE POWER COMPANY.
SUBSTATION LOT
AND
TRANSMISSION LINE
TO
PLANTATION PIPE LINE COMPANY.
SIMPSONVILLE, S.C.

SCALE: 1"=400'
OCT. 7, 1942.
BOOK NO. 226
FILE NO. A-48-W.

FILE NO. G-86

14359 Min. This 17 day of July 10 58
And recorded in Vol. M W Page 17
G. S. Simpsonville
Register-Measure Company, Greenville County, S.C.

M W - 17