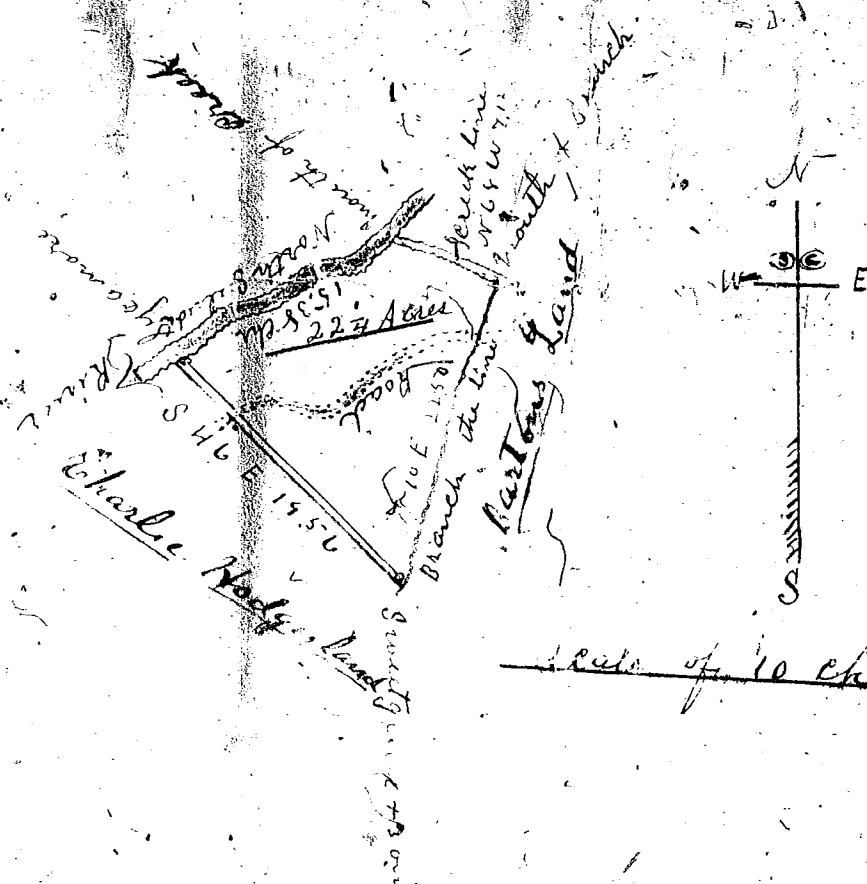


Plat Book L.L. Page 145

Application 180615
Pessie Mae Howard



Scale of 10 Chs Per inch

South Division
Greenville County

By the request of Charles Hodge
I have partly surveyed and cut
of the above tract of land, and
find it to contain 22 1/4 Acres,
and has such shape marked and
boundry as the above Plat represents
Surveyed Jan. 15-1958
W. A. Hester
Surveyor