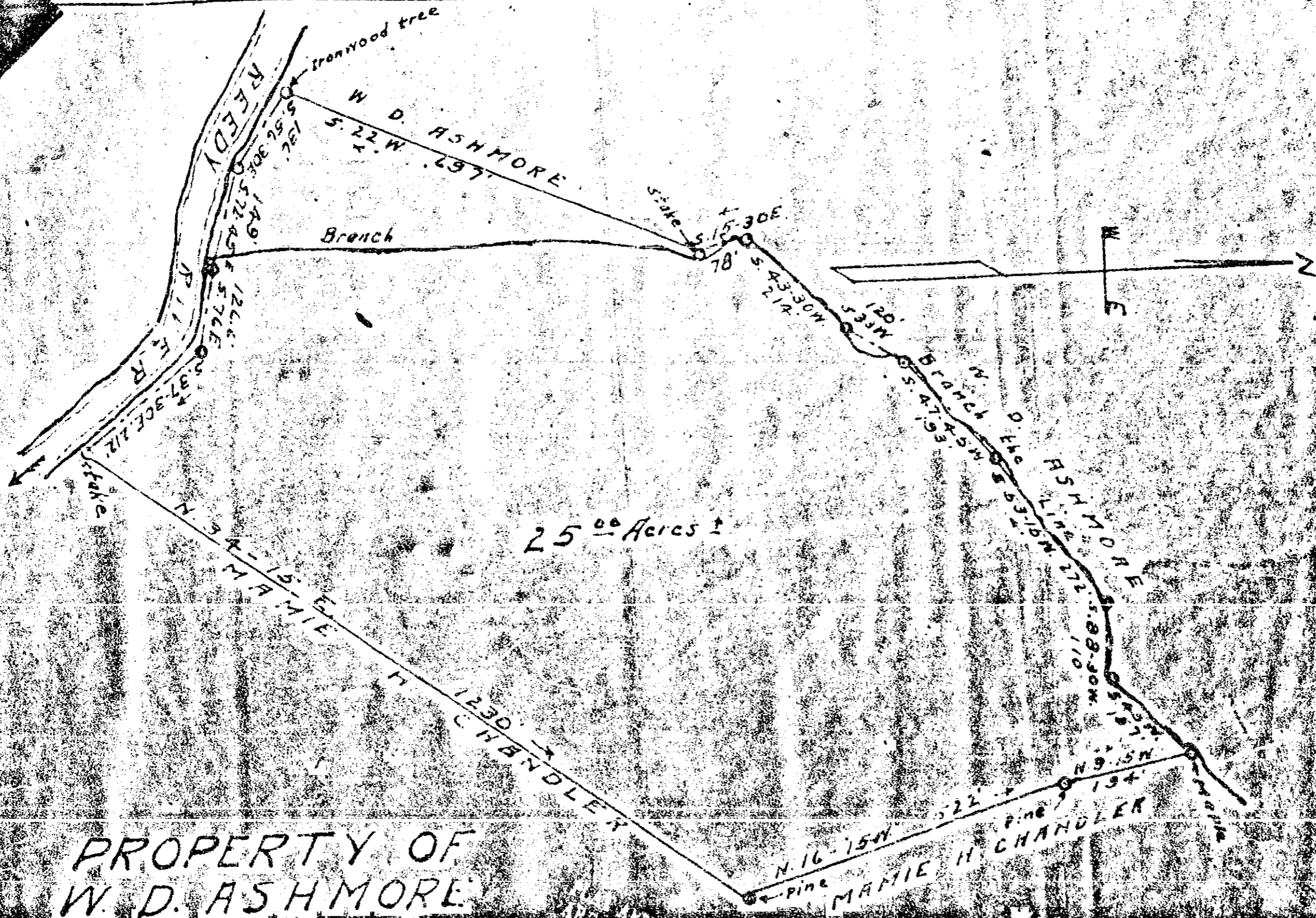


Plat Book-II-Page 13A



PROPERTY OF
W. D. ASHMORE

SOLD TO
BEN SHERMAN
GREENVILLE COUNTY - S. C.
Scale 1" = 200' - Mar. 27, 1946
W. J. Riddle - Surveyor

29923 Filed this 31 day of Dec. 19 54
And Recorded in Vol. 13 Page 13
Edna Lowmire
Register Messrs. Lowmire Greenville County, S. C.