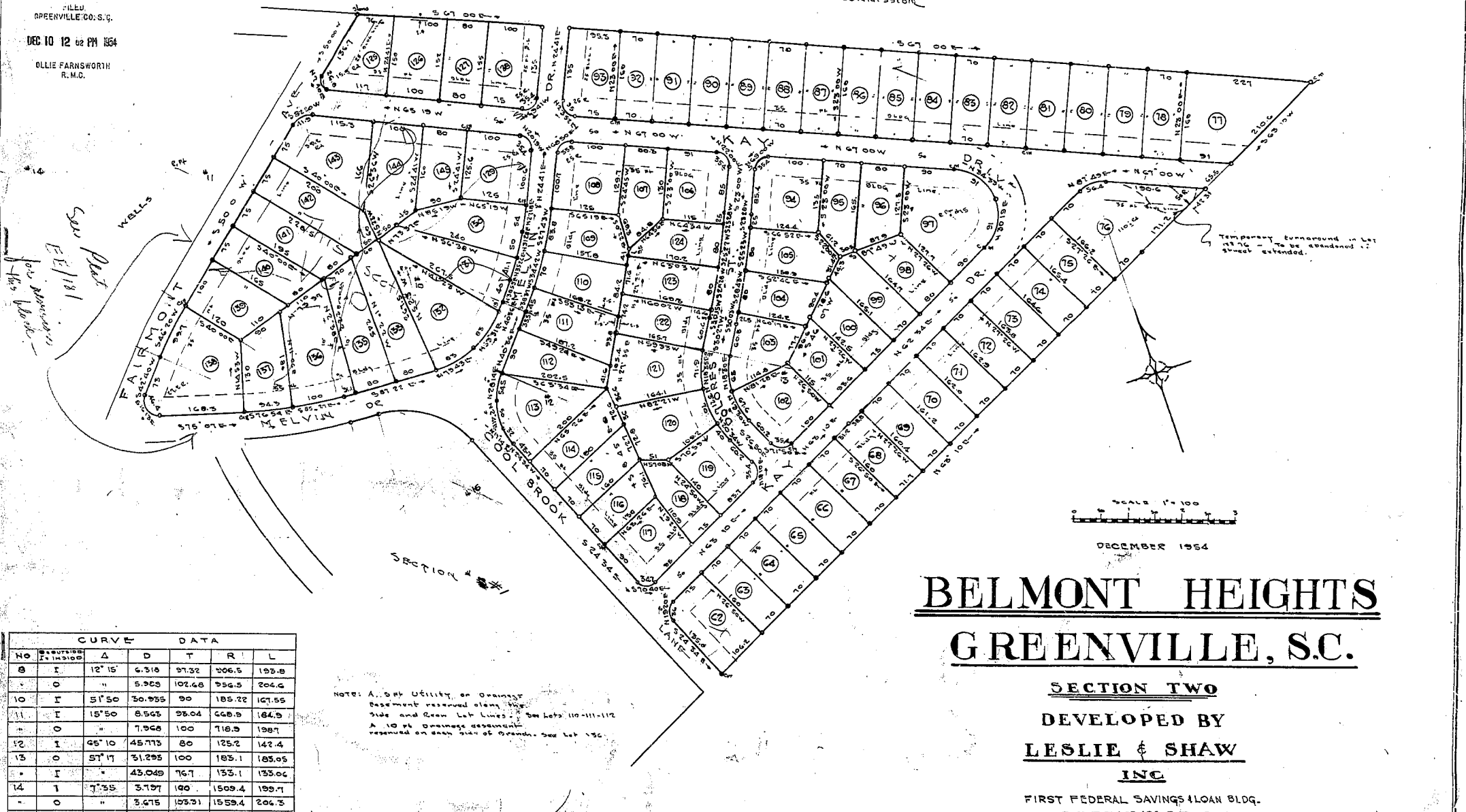


Plat Book-GG-Page 99

DEC 10 1954
28352

FILED
GREENVILLE CO. S.C.
DEC 10 12 02 PM 1954
OLLIE FARNSWORTH
R.M.C.

SEWER COMMISSION



SCALE 1" = 100'
DECEMBER 1954

BELMONT HEIGHTS GREENVILLE, S.C.

SECTION TWO
DEVELOPED BY
LESLIE & SHAW
INC
FIRST FEDERAL SAVINGS & LOAN BLDG.
GREENVILLE, S.C.

CURVE DATA						
NO	BEARING	DELTA	D	T	R	L
8	I	12° 15'	6.318	97.32	206.5	193.8
	O	"	5.965	102.68	236.5	204.6
10	I	51° 50'	30.955	90	185.22	167.55
11	I	15° 50'	8.565	26.04	608.9	184.5
	O	"	7.968	100	718.9	198.7
12	I	45° 10'	45.715	80	125.2	142.4
13	O	57° 17'	31.295	100	185.1	185.95
	I	"	43.049	76.7	153.1	155.06
14	I	7° 35'	3.797	190	1509.4	199.7
	O	"	3.675	193.9	1559.4	204.3
15	I	135° 50'	67.406	180.7	85	207.0
16	I	8° 54'	8.515	50	472.9	100

NOTE: A. 5 ft Utility or Drainage Easement reserved along the Side and Rear Lot Lines. See Lots 110-111-112. A 10 ft Drainage easement reserved on each side of Drains. See Lot 136.

See Plat E 1181

BAD COPY

FINAL PLAN APPROVED
GREENVILLE CITY PLANNING & ZONING COMMISSION
DATED 12-17-54
C. C. JONES
SECRETARY OF COMMISSION

C. C. JONES
ENGINEER
GREENVILLE, S.C.

#28352 and This is a copy of Dec 10 1954
and Recorded in Vol 1181, Page 101 of
Ollie Farnsworth
Register Means Commission Greenville County, S.C.