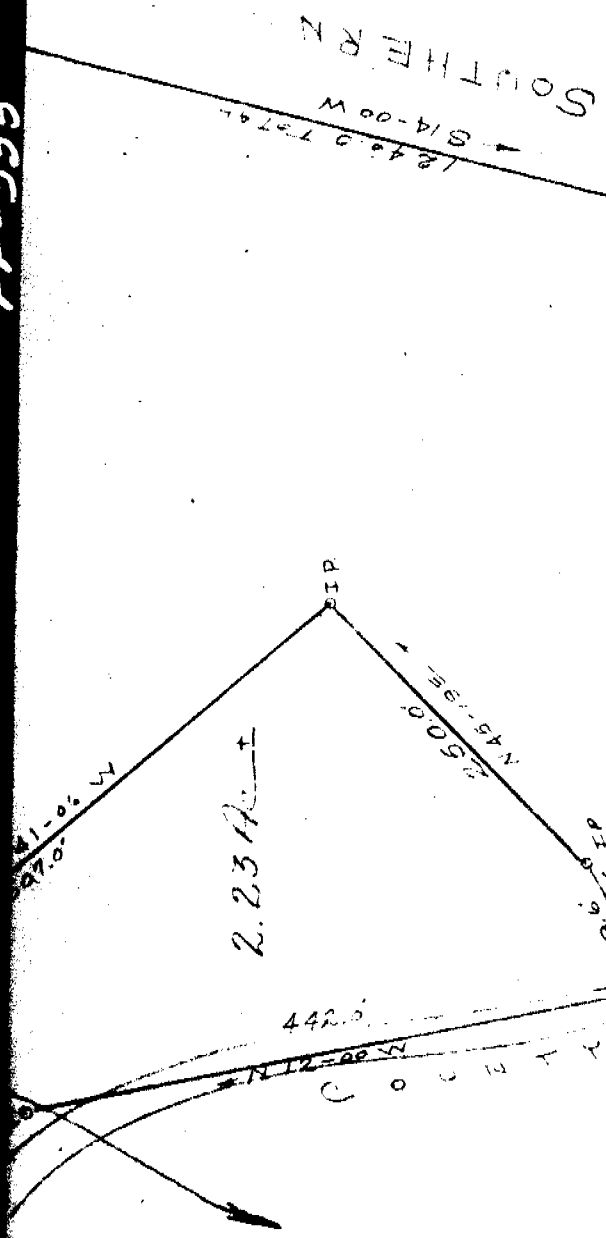


FF-335



PROPERTY OF
 C. K. RICE
 Greenville County - S.C.
 Scale 1"=100

Aug. 27, 1955

NOTE: ONLY 2.23 Acre
 TRACT Surveyed Aug. 27, 1955
 OTHER Lines Drawn from
 Plat Made, By W.J. Riddle
 Aug 1947, as Map # 3 of
 A.R. Hunter, Est.

Recorded September 10th. 1955
 at 10:00 A. M. #23555

#23555
 SEP 10 1955 10 A.M.

Picture

Surveyed By J.C. Blaskin