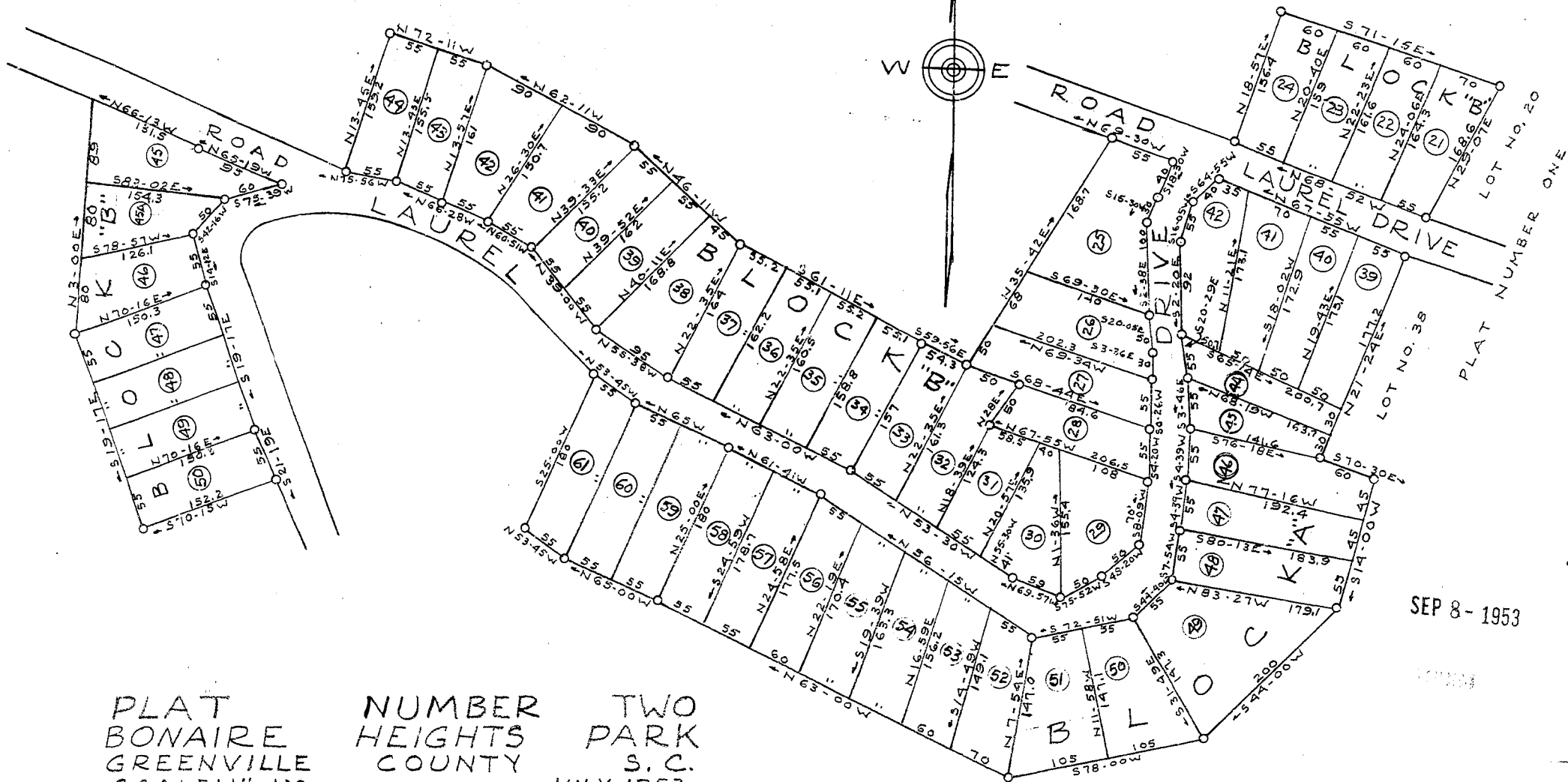


SEP 8 2 49 PM 1953

CLUB PARKWAY  
R.M.O.

# Plat Book - E E - Page 41 A



PLAT NUMBER TWO  
 BONAIRE HEIGHTS PARK  
 GREENVILLE COUNTY S.C.  
 SCALE: 1" = 100'  
 OWNER - HUGH O. PADRICK JR., TRUSTEE  
 JULY 1953

J. Mac Richardson - R.L.S. No. 598

SEP 8 - 1953

NOTE: R.O.V. WIDTH OF LAUREL DRIVE VARIES FROM 36' TO 52'

#19964... Part of...