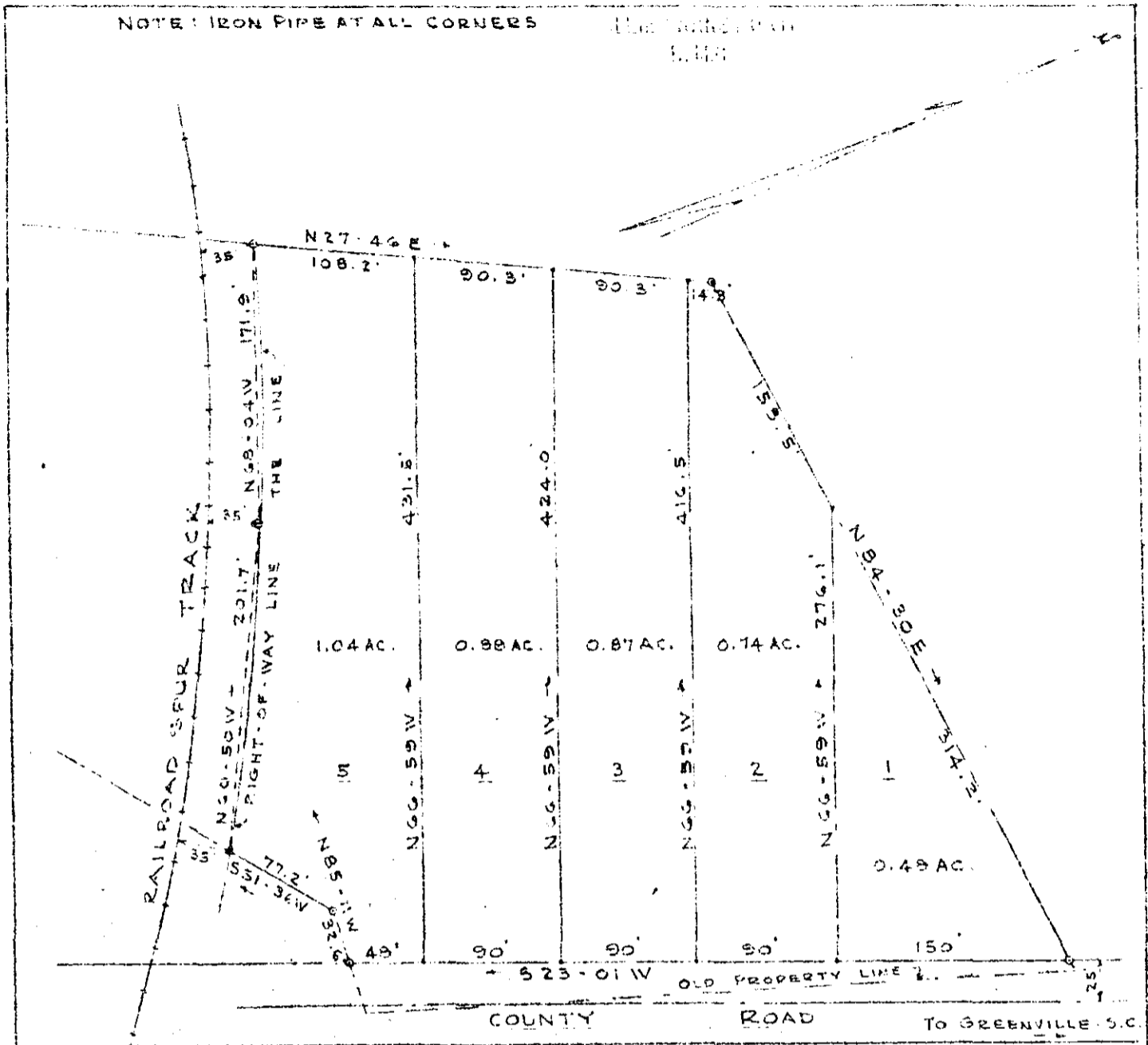


DEC 29 10 27 AM 1952

NOTE: IRON PIPE AT ALL CORNERS

PLAT NUMBER 78572



DEC 29 1952

78572

Plat Showing A Subdivision of Property of

FLETCHER BLACK

LOCATED IN GREENVILLE COUNTY, S. C.

Approximately 4.5 miles from the center of
GREENVILLE, S. C.

Scale: 1" = 100' Dated: December 19, 1952

Pickell & Pickell - Engineers
Greenville, S. C.

FINAL PLAN APPROVED
 GREENVILLE CITY PLANNING & ZONING COMMISSION
 DATE Dec 27 1952 BY Charles M. Long
 SECRETARY OF COMMISSION

78572 Filed This 29 day of Dec. 19 52

and Recorded in Vol. 00 Page 21 at

Odie Farnsworth

Register Mesne Conveyance Greenville County, S. C.