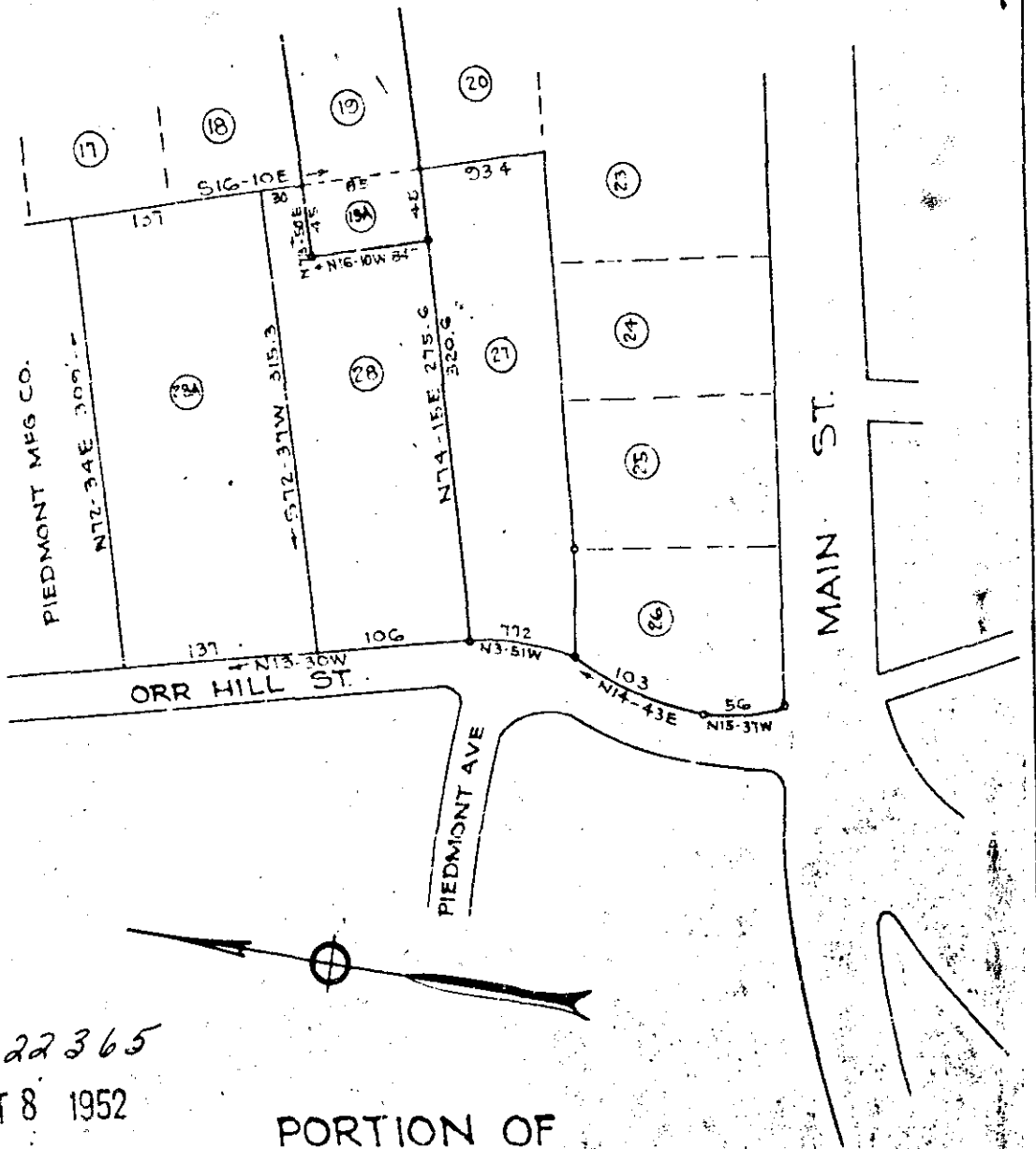


Plat Book-CC-Page 181A



22365
OCT 8 1952

PORTION OF
SECTION NO. 3
PIEDMONT MFG. CO.
GREENVILLE CO. S.C.

Scale 1"=100' Aug. 1952

DALTON & NEVES

Plat Revised Sept. 1952 (Lot 19A)
Iron Pins at all Corners

22365 - Plat This 8 day of Oct 1952
first Recorded in Vol CC Page 181 at
Ollie Sanson
Register Mesne Conveyance Greenville County, S.C.