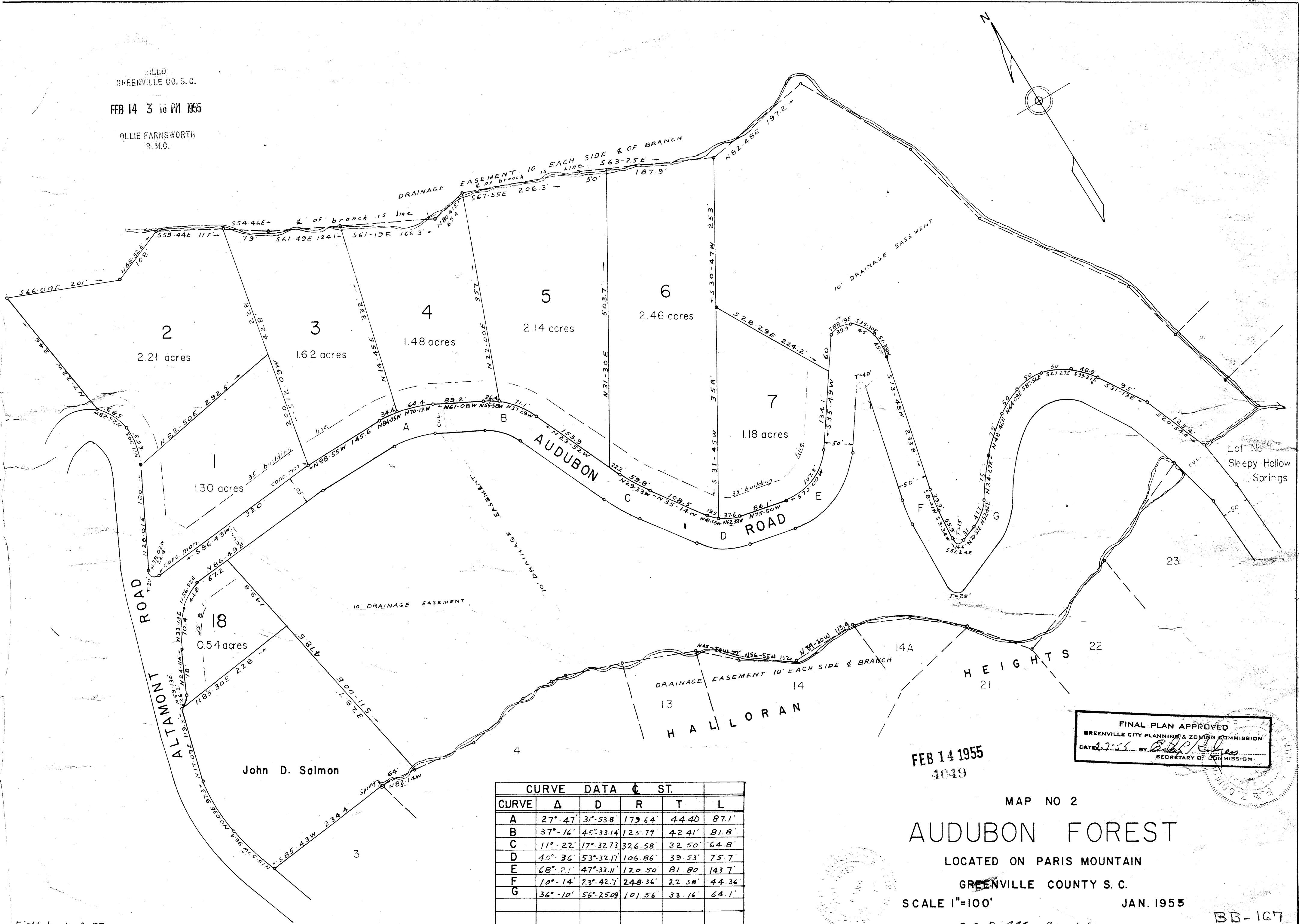


FILED
GREENVILLE CO. S. C.
FEB 14 3 10 PM 1955
OLLIE FARNSWORTH
R. M. C.



CURVE DATA & ST.					
CURVE	Δ	D	R	T	L
A	27°-47'	31'-53.8'	175.64	44.40	87.1'
B	37°-16'	45°-33.14'	125.79'	42.41'	81.8'
C	11°-22'	17°-32.73'	326.58	32.50'	64.8'
D	40°-36'	53°-32.17'	106.86'	39.53'	75.7'
E	68°-21'	47°-33.11'	120.50'	81.80'	143.7'
F	10°-14'	23°-42.7'	248.36'	22.38'	44.36'
G	36°-10'	56°-25.09'	101.56'	33.16'	64.1'

FEB 14 1955
4019

FINAL PLAN APPROVED
GREENVILLE CITY PLANNING & ZONING COMMISSION
DATE 2-7-55 BY *[Signature]*
SECRETARY OF COMMISSION

MAP NO 2
AUDUBON FOREST
LOCATED ON PARIS MOUNTAIN
GREENVILLE COUNTY S. C.
SCALE 1"=100'
JAN. 1955
BB-167

Field book A-55

#11049 Filed This 14 day of Feb 1955
And Recorded in Vol. BB Page 167
[Signature]
Register Messrs Comproyance Greenville County, S. C.

*See other part to
Audubon Forest
see Page 197 in this book.*