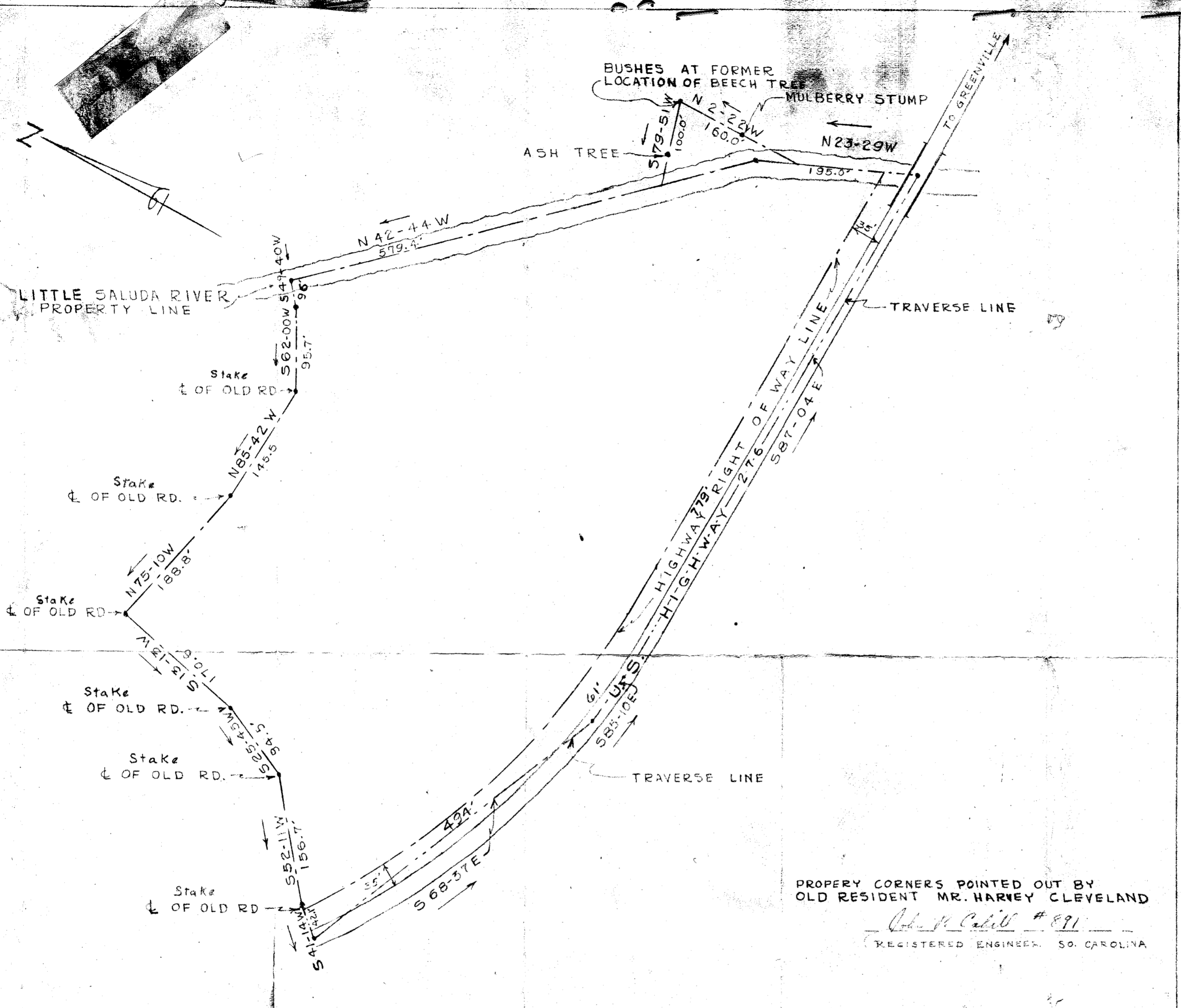


#27405 Filed This 18 day of Dec 1953
 and Recorded in Vol. B.B. Page 125 at
 Oona Somewhat
 Registrar Blount County Greenville County, S.C.



PROPERTY CORNERS POINTED OUT BY
 OLD RESIDENT MR. HARVEY CLEVELAND
John W. Cahill #891
 REGISTERED ENGINEER, SO. CAROLINA

AREA INSIDE METES & BOUNDS	9.53 ACRES
LESS AREA OF HWYWAY R.O.W.	.83 ACRES
	8.70 ACRES
PLUS TRIANGLE AT EAST END	.19
	8.89 ACRES

PLAT OF PROPERTY
 MRS. HARRIET D. WILKINS ESTATE
 CLEVELAND SO. CAR.

THE McPHERSON CO.
 ENGINEERS—ARCHITECTS
 GREENVILLE, S. C.

DATE: 8-19-47 SCALE: 1" = 100' FILE NO. BY: R.E.J.

THE McPHERSON CO.
 ENGINEERS & ARCHITECTS
 GREENVILLE, S. C.
 FEB 9 1948

BB-155