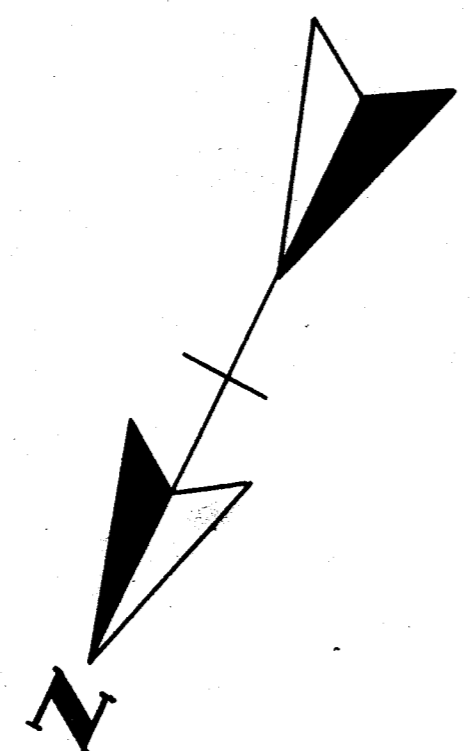
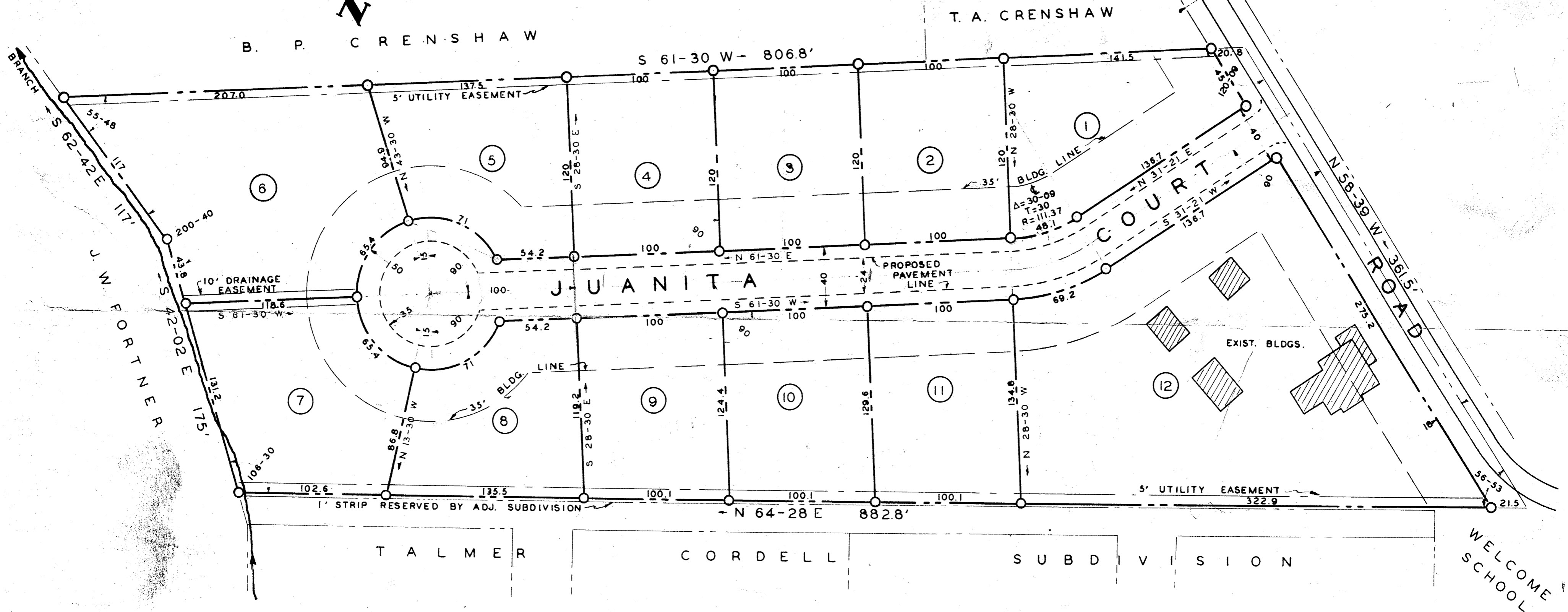


RECEIVED - FHA By
 \$
 JUL 31 1953
 CODE CASH SCH



FINAL PLAN APPROVED
 GREENVILLE CITY PLANNING & ZONING COMMISSION
 DATE 9-8-52 BY *C. H. ...*
 SECRETARY OF COMMISSION



**JUANITA COURT
 SUBDIVISION**

PROPERTY OF W. L. KING LOCATED NEAR WELCOME SCHOOL
 IN GREENVILLE TOWNSHIP, GREENVILLE COUNTY, SOUTH
 CAROLINA, CONTAINING 5.3 ACRES.

CERTIFICATE

WE HEREBY CERTIFY THAT WE HAVE
 SURVEYED AND SUBDIVIDED THE PROPERTY
 SHOWN HEREON; AND THAT THE PLAT HEREON
 IS A TRUE AND CORRECT REPRESENTATION OF
 SAID PROPERTY.

BEESON & SCOTT, CONSULTING ENGINEERS
 EASLEY, S. C.

BY: *J. M. Beeson*
 J. M. BEESON
 S. C. REG. ENG. & L. S. NO. 1209

AUG 26 1952

19023

BB-153

SCALE: 1" = 50'

20 AUGUST 1952

IRON PINS AT ALL CORNERS

#19023 Filed This 26 day of Aug. 1952
 1st Recorded in Vol. D.P. 153
Edna F. ...
 Registrar of Deeds Greenville County, S. C.