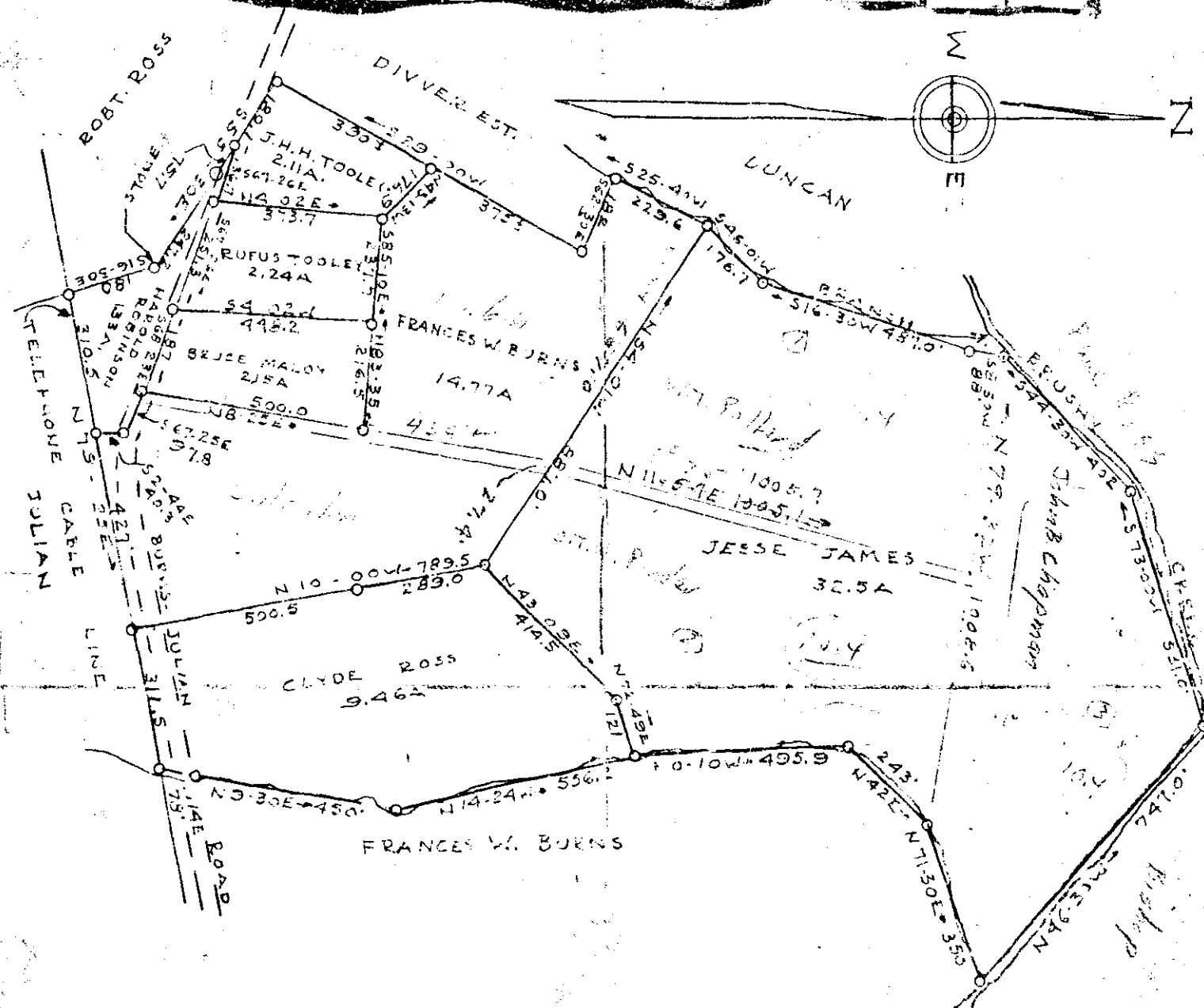


Plat Book-BB-Page 104 B

104



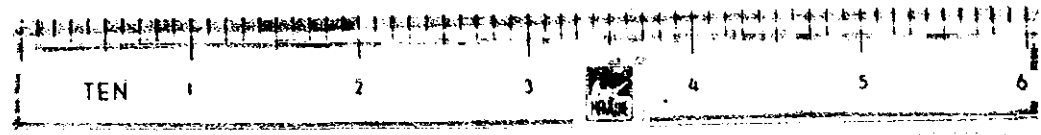
PROPERTY OF
 FRANCES W. BURNS ET. AL.
 BUTLER TOWNSHIP GREENVILLE CO.
 SOUTH CAROLINA
 SCALE 1"=300'-SEPT. 1953

J. M. RICHARDS - R. L. S. COR.

24881
 SEP 24 1955

NOTE: OUTSIDE LINES FROM PLAT BY H.S. BROCKMAN-MAR. 1, 1943 EXCEPT A CALCULATED CHANGE IN ELEVATION LINE ADJOINING FRANCES BURNS AND IN THE BRANCH LINE ADJOINING DUNCAN. ALL ACRES CALCULATED BY M.E. - J.M.R.

BB-104



BAD COPY

#24881 filed this day of Sept 19 55
 and recorded in PLB pg. 104 B
 J. M. RICHARDS
 Register, Meigs County, S. C.