

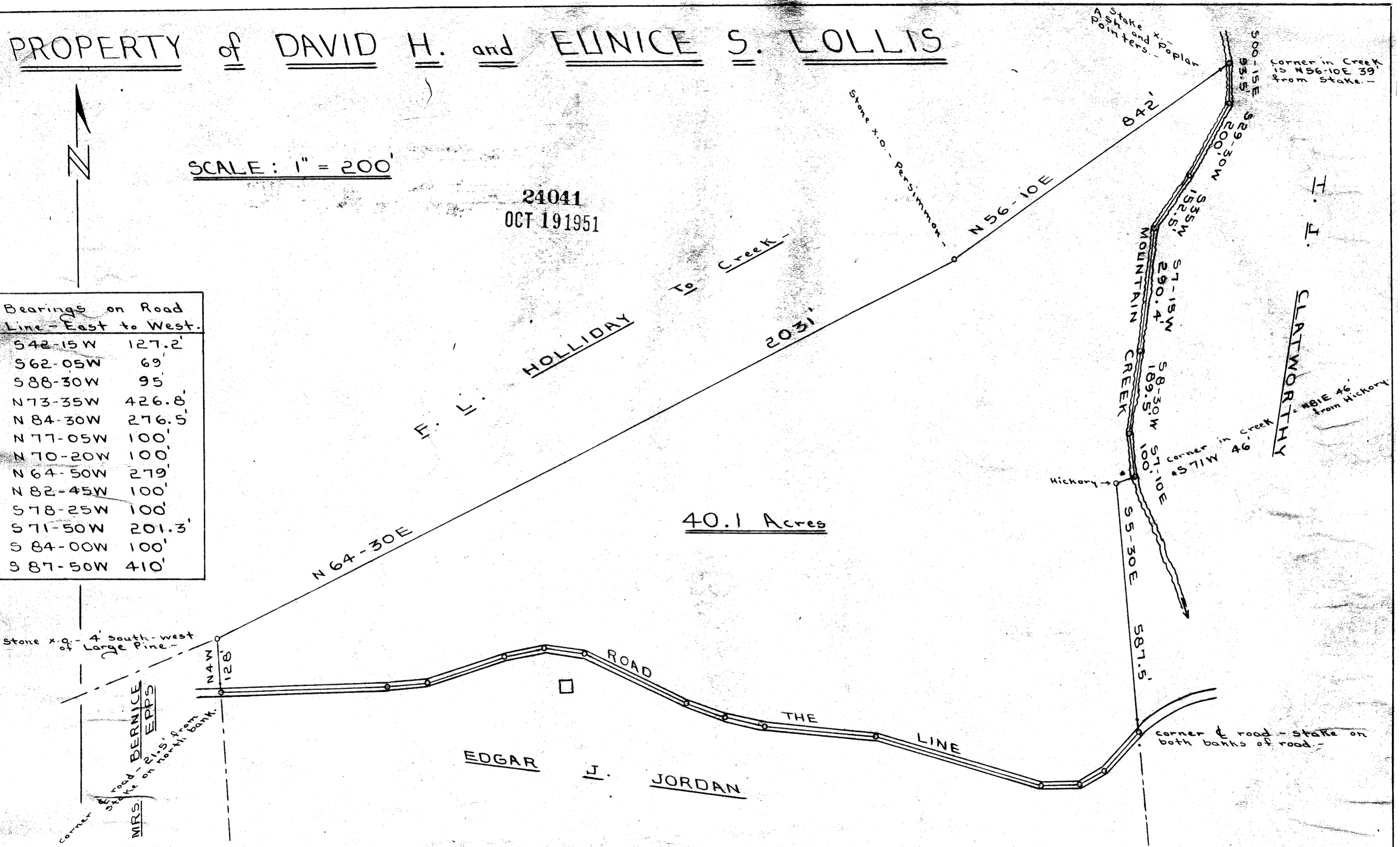
#24041 Filed This 19 day of Oct 1951
And Recorded in vol 77 Page 166 at
G.W. Fausworth
Register Means Conveyance Greenville County, S. C.

PROPERTY of DAVID H. and ELINICE S. LOLLIS

SCALE: 1" = 200'

24041
OCT 19 1951

Bearings on Road Line - East to West.	
S 42-15 W	127.2'
S 62-05 W	69'
S 88-30 W	95'
N 73-35 W	426.8'
N 84-30 W	276.5'
N 77-05 W	100'
N 70-20 W	100'
N 64-50 W	279'
N 82-45 W	100'
S 78-25 W	100'
S 71-50 W	201.3'
S 84-00 W	100'
S 87-50 W	410'



South Carolina
Greenville County

Plat for a tract of land located on Mountain Creek about 1 mile East. of F.L. Holliday's Store, and being in the southern portion of Greenville County, near Saluda River. - Said tract contains Forty and One-Tenth (40.1) Acres, more or less. -

Note: Lines between F.L. Holliday and this plat were taken from plat by A.J. Schisler, dated 1936. -
Other lines surveyed Oct. 8 and 9, 1951. -

T. J. Leslie, Reg. Surveyor
By - Floyd E. Ragsdale, Ost.