

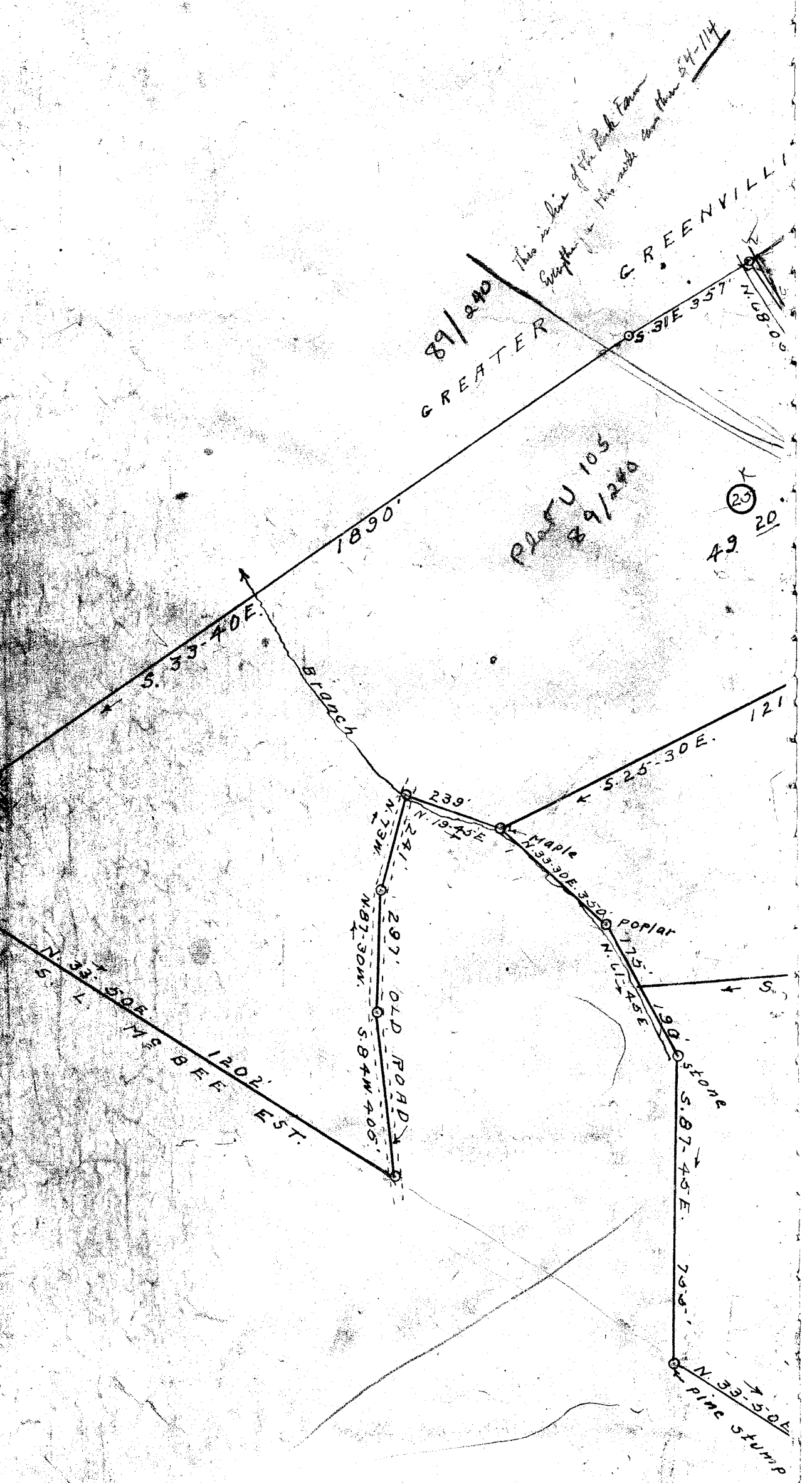


89/240
GREATER
This is line of the Park Farm
Survey - This note from the 84-114

GREENVILLE

PLAT U 105
89/240

49 20
23



18 2700
3 7347
5400 10747

NOTE - Propose
plat revised

#23497 Filed This 27 day of Sept 1950

And recorded in Vol. 4 p. 51 at V.

Ellis Samworth

Register Mesne Conveyance Greenville County, S.C.