

N.W. line A-R-1A/114
S.E. " " 89/240

SEWER DIST COMMISSION

See 4-50

8506
APR 7 1939

PROPERTY OF
LUCY L. HINDMAN
BUTLER TOWNSHIP
GREENVILLE COUNTY S.C.
Scale 1"=300' October 1939

W. J. Riddle - Surveyor

Red road laid out through Lots 3-8-9 and
June 4-1942. By W. J. R.

CWS

129
155
140
187
209
396.0
184.4
211.6
375
326

98.4
243
241.4

515
130
665
6875

10 00 A.

30 00 A.

34 21 A.

20 25 A.

34 23 A.

32 44 A.

30 20 A.

30 26 A.

49 30 A.

16 49 A.

12 24 A.

12 24 A.

12 24 A.

12 24 A.

12 24 A.

12 24 A.

12 24 A.

12 24 A.

12 24 A.

12 24 A.

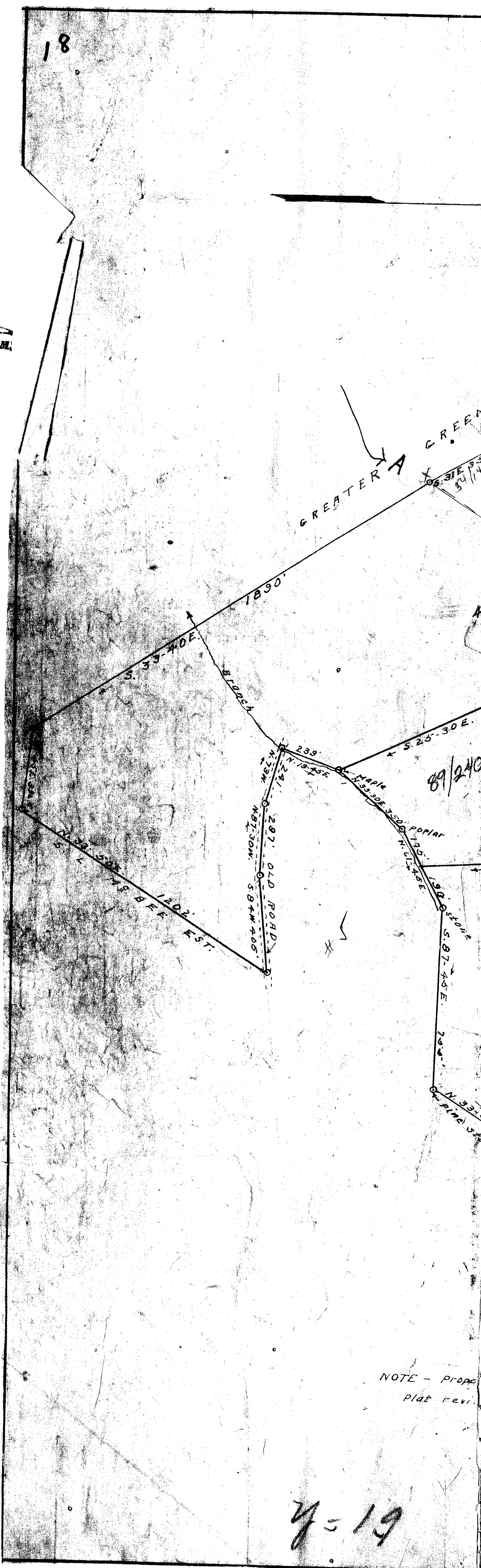
12 24 A.

12 24 A.

12 24 A.

18

#8506 Paid This day of 19
And Recorded in Vol. 4 Page 19 of 207
C. G. Samsworth
Register Mesite Conveyance Greenville County, S. C.



NOTE - Propo
plat revi

y = 19