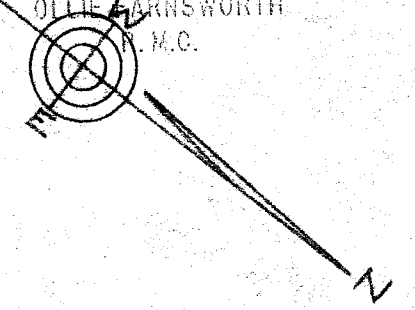


FILED  
GREENVILLE CO. S. C.

AUG 14 3 02 PM 1950

OLLIE FARNSWORTH  
M.C.



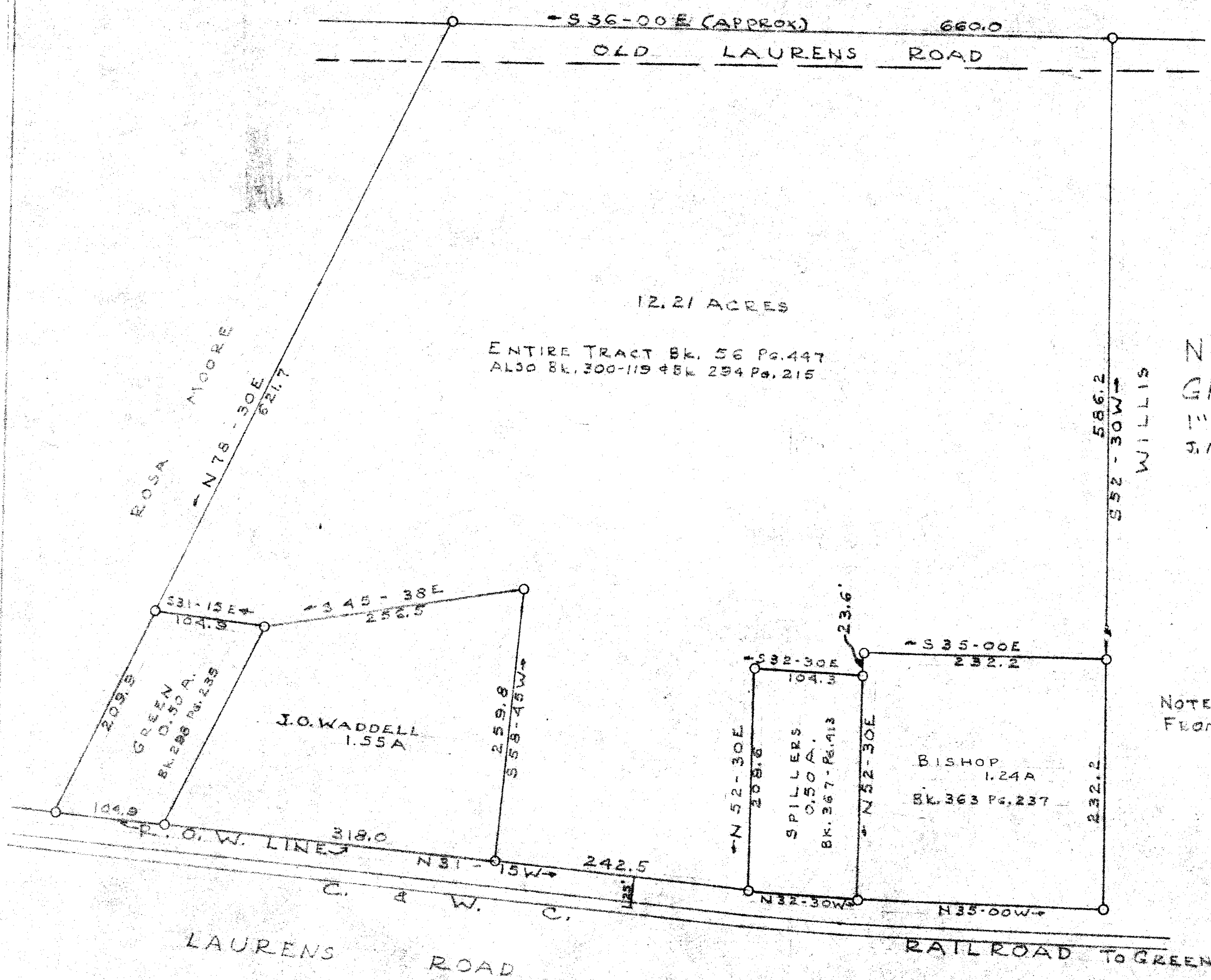
19647 AUG 14 1950

W. M. SMITH  
NEAR SIMPSONVILLE S.C.  
GREENVILLE COUNTY

1"=100' AUG. 1950  
J. MAC RICHARDSON R.L.S. #598

12.21 ACRES

ENTIRE TRACT BK. 56 Pg. 447  
ALSO BK. 300-119 & BK. 254 Pg. 215



NOTE: WADDELL LOT SURVEYED - REST FROM DEEDS AS INDICATED

IRON PINS ALL CORNERS

100  
Oute in

#19647 Filed This 14 day of Aug 1950  
And Recorded in Vol. 2 Page 60 at 3:02 P.M.  
Ollie Farnsworth  
Register Mesne Conveyance Greenville County, S. C.