

#20561
AUG 31 1949

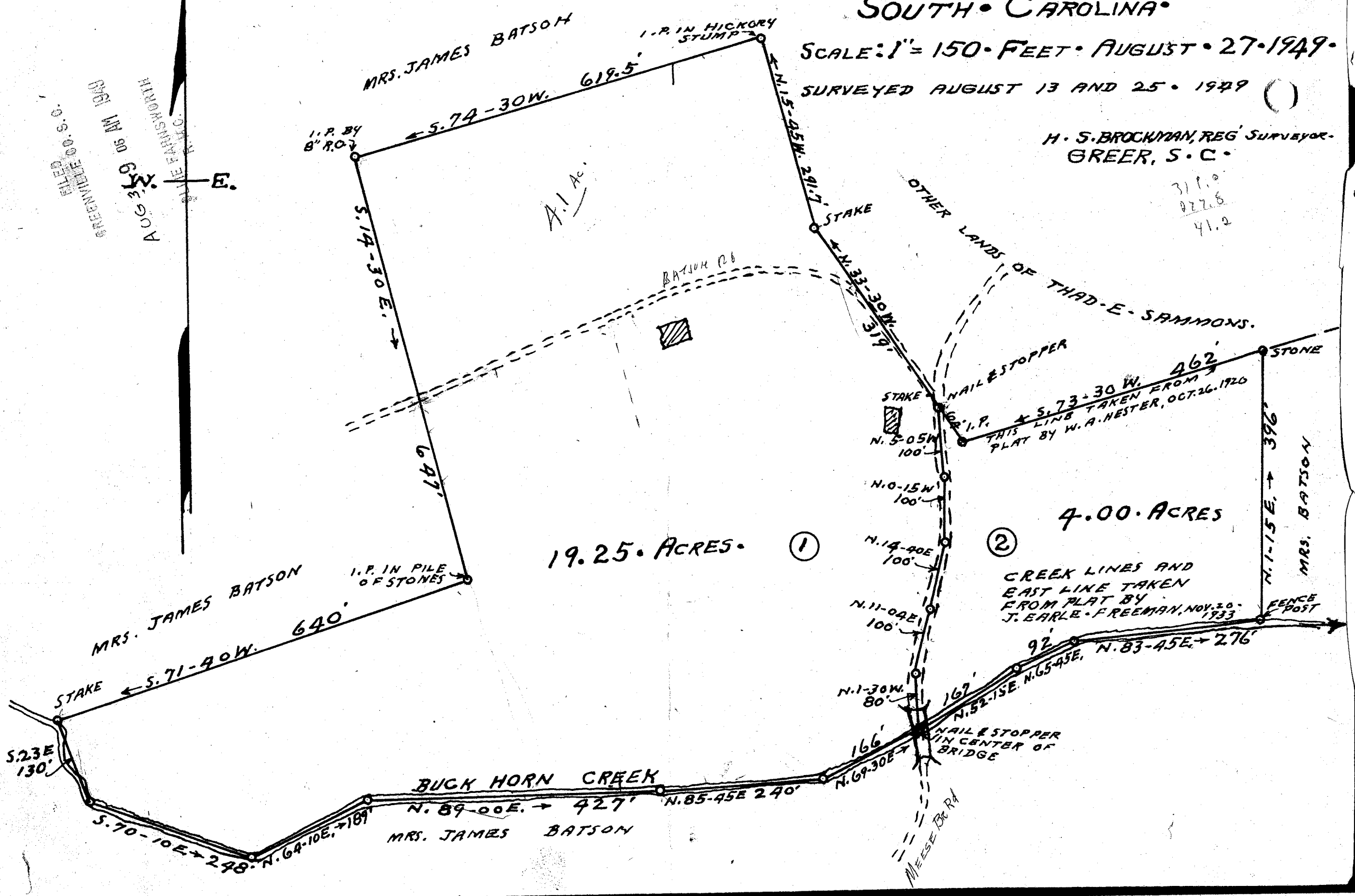
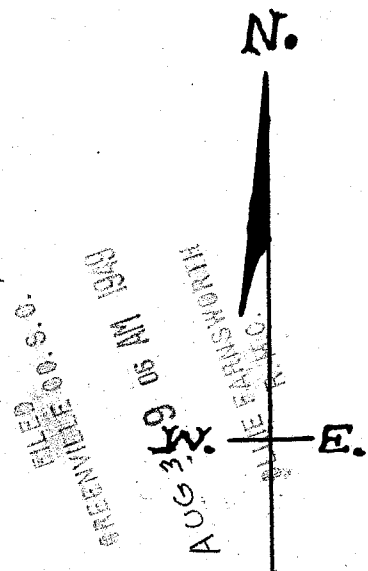
PROPERTY OF THAD E SAMMONS

CHICK SPRINGS TOWNSHIP GREENVILLE COUNTY
SOUTH CAROLINA

SCALE: 1" = 150 FEET AUGUST 27 1949
SURVEYED AUGUST 13 AND 25 1949

H. S. BROCKMAN, REG. SURVEYOR
GREER, S. C.

311.0
272.6
41.2



#20561 This 31 day of Aug 1949
And Recorded in Vol. V 196 at
Gollie Farnsworth
Register Mesne Conveyance Greenville County, S. C.

150
4
600