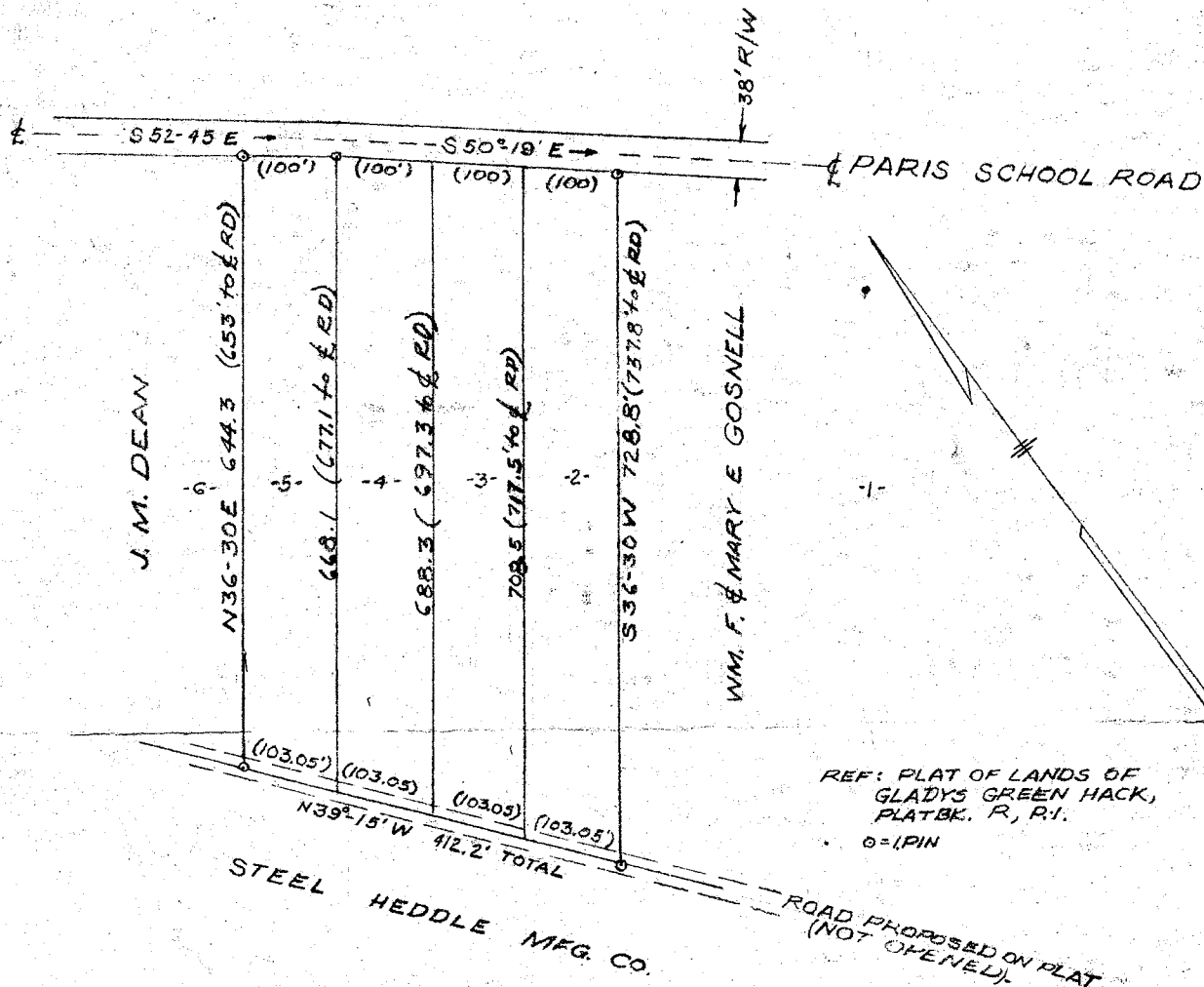


22863

OCT 18 1948



PROPERTY OF
STEEL HEDDLE MFG. CO.
AT PARIS STA., NEAR GREENVILLE S.C.

SCALE: 1/4" = 200 FT.

15 OCT. 1948

FILED
GREENVILLE CO. S.C.
OCT 18 4 39 PM 1948
OLLIE FARMWORTH
R.M.C.

[Signature]
Registered Engineer 4308

PIEDMONT ENGINEERING SERVICE
GREENVILLE, S. C.



Plat Filed This 18 day of Oct 1948
And Recorded in 79 at 4:38 P.M.
OLLIE FARMWORTH
Register in the County of Greenville County, S. C.
22863

79