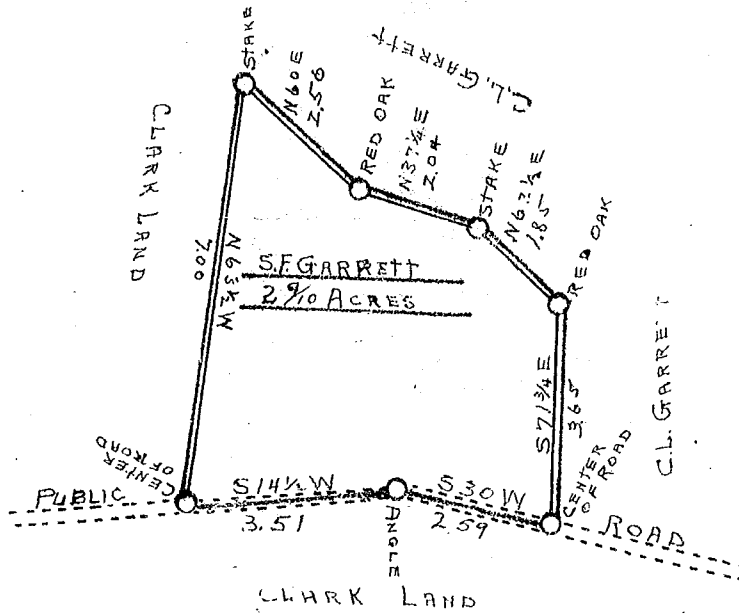


SCALE: 200 FEET PER INCH

8782



State of South Carolina,
County of Greenville.

This plat represents a certian peice, parcel or tract of land situate and being in Grove Township, State and County aforesaid, containing two and nine-tenths (2.9) acres, more or less.

Having such shape, marks, metes and bounds as shown.

Surveyed August 7, 1947.

W. J. Adkins
Surveyor.