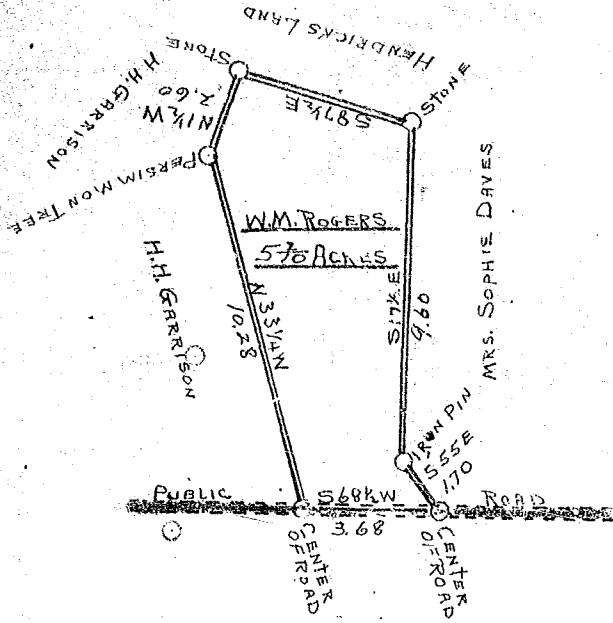


SCALE: 5 CHAINS PER INCH



State of South Carolina
County of Greenville

This plat represents a certain piece, parcel or tract of land situated and being in Grove Township, State and County aforesaid, belonging to W. M. Rogers.

It has such shape, marks, metes and bounds as shown by the above plat.

Surveyed July 28, 1947.

W. H. Hines
Surveyor

Recorded August 30th. 1949 at 10:00 A. M. #20437

State of South Carolina
 County of Greenville
 This plat represents a certain piece, parcel or tract of land situated and being in Grove Township, State and County aforesaid, belonging to W. M. Rogers.
 It has such shape, marks, metes and bounds as shown by the above plat.
 Surveyed July 28, 1947.
 W. H. Hines
 Surveyor
 Recorded August 30th. 1949 at 10:00 A. M. #20437

