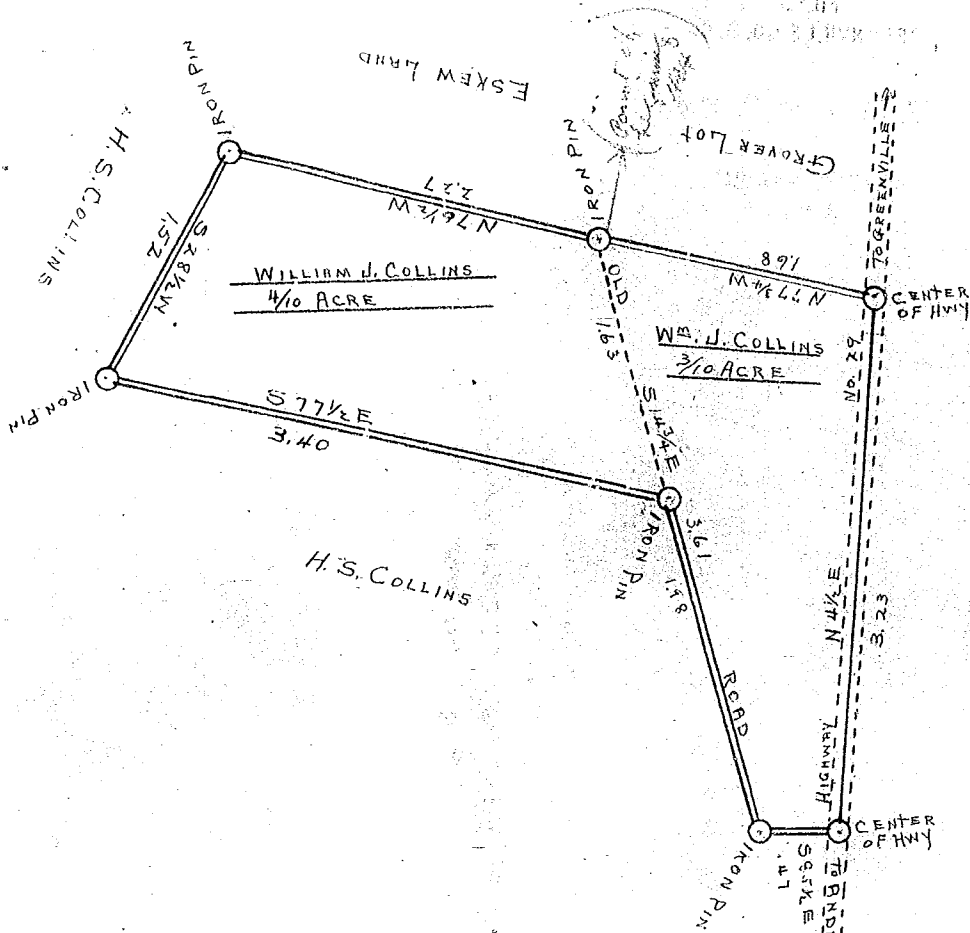


SCALE: 1/2" = 1" INCH

15251

JUL 13 1948



State of South Carolina
County of Greenville

This plat represents a certain piece, parcel or tract of land situate and being in Grove Township, State and County aforesaid, containing three tenths (0.3) acre, more or less conveyed by Davis, and four tenths (0.4) acre, more or less conveyed by H. S. Collins.

Having such share, marks, metes and bounds as shown.

Surveyed May, 17, A. D. 1948

W. J. Perkins
Surveyor

Recorded July 13th 1948 at 4:02 P. M. #15251