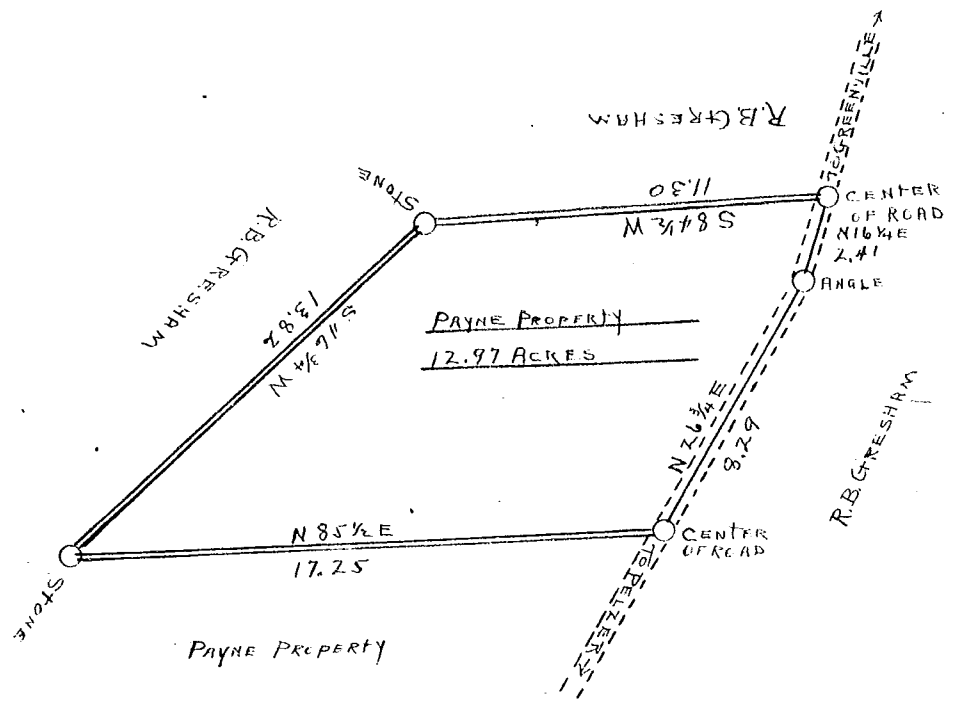


SCALE 3 CHAINS PER INCH



State of South Carolina
County of Greenville

This plat represents a certain piece, parcel or tract of land situate and being in Grove Township, State and County aforesaid, containing twelve and ninety seven hundredths (12.97) acres, more or less.

Having such shape, marks, notes and bounds as shown.

Surveyed May, 19, A. D. 1948

Frances P. Hanson
Rudolph P. Lawrence
Jerry L. Payne

W. H. King
Surveyor