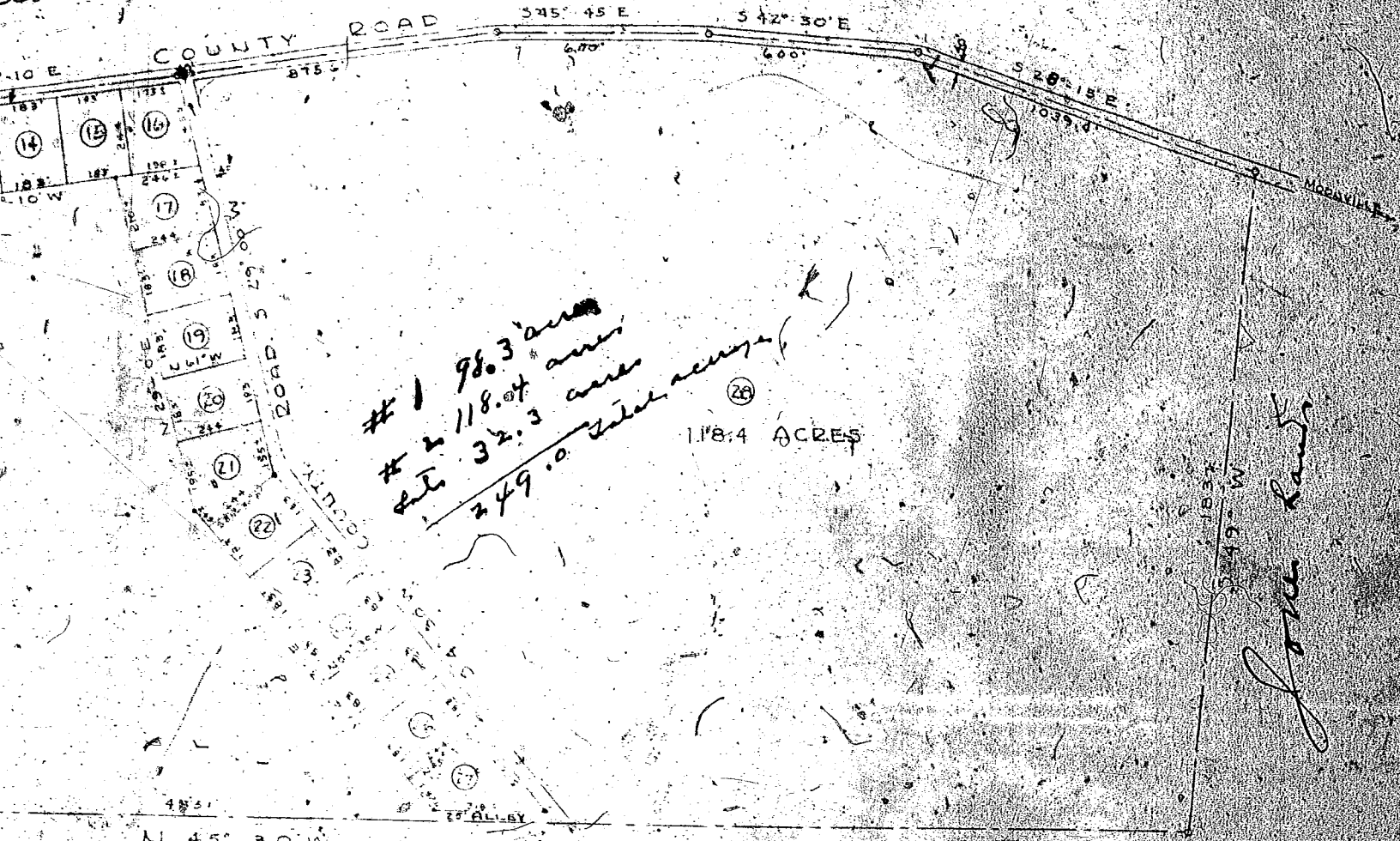


Settles and others



1 98.3 acres
 # 2 118.04 acres
 Sub 32.3 acres
 249.0 total acreage
 118.4 ACRES

John Lamb

Young

Photostat has been reduced 30%

B D I V N S I O N

FOR

A B L A I N E

LOCATED NEAR

GREENVILLE COUNTY, S. C.

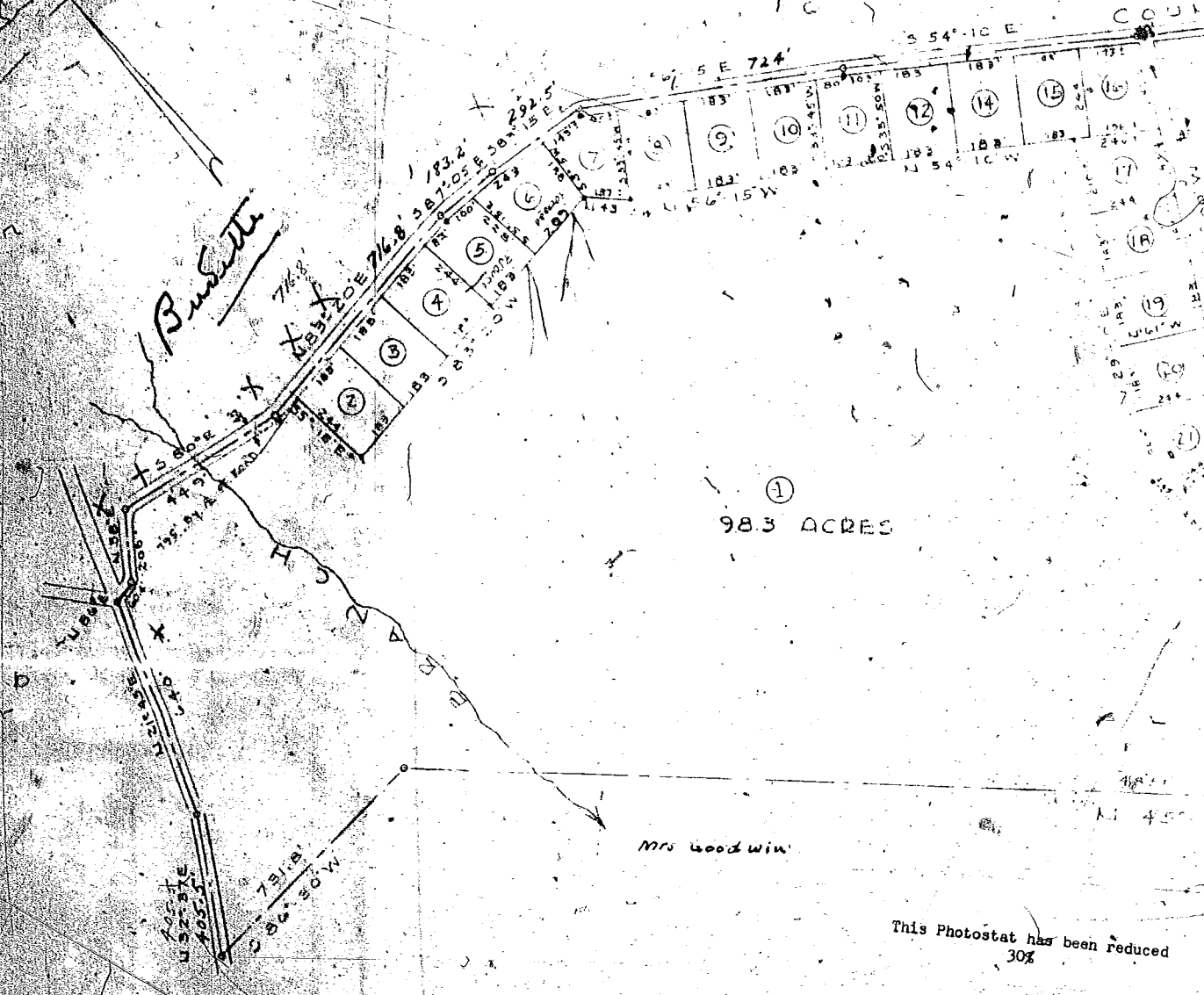
SCALE: 1" = 300' FEB. 1946

PICKELL ENGRS. GREENVILLE, S. C.

NOTE:
 OUTSIDE BOUNDARY LINES PLATTED
 FROM SURVEY OF B.W. BURDETTE
 PROPERTY BY W.J. RIDDLE, SURVEYOR-1937

*Lot 25
 not included*

B.W. Burdette and



①
 98.3 ACRES

Mrs Goodwin

This Photostat has been reduced
 30%

S U B D I
 D · A · B L
 L O C A T
 P I E D M O N T , G R E E N V I L
 S C A L E : 1
 P I C K E L L & P I C K E L L

BAD COPY