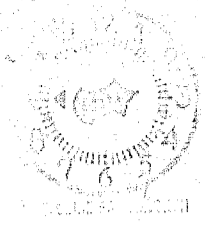


AUG 9 1945

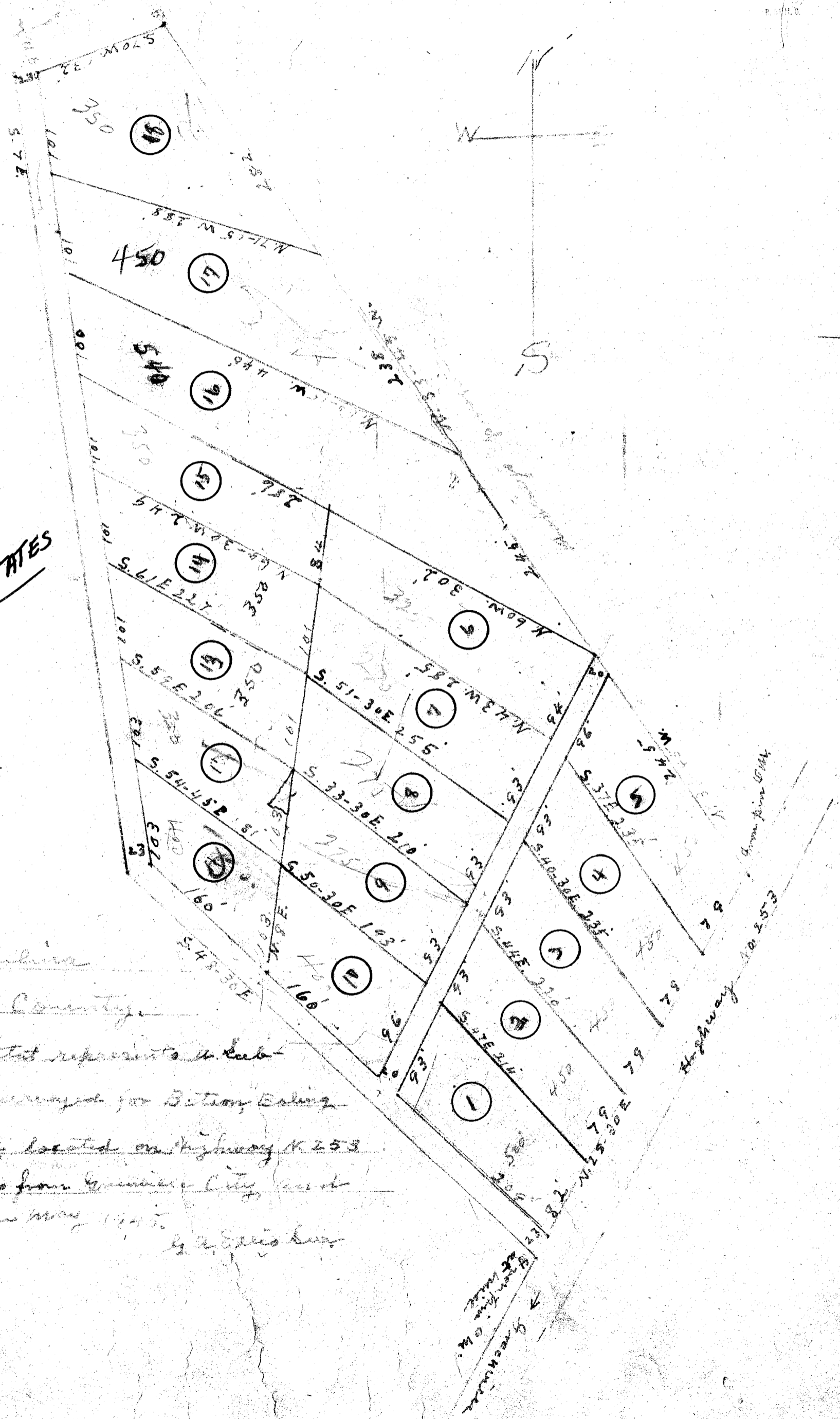
#9229 Filed This 9th day of Aug 1945
And Recorded in Vol. 193 at 9:12 AM
Ollie Jarman
Register Mesne Conveyance Greenville County, S.C.

9229



AUG - 9 1945 PM

PARIS VIEW ESTATES



Paris View Estates
Greenville County
The above lot represents a sub-
division of a survey for Dutton, Ealing
and Tompkins, located on Highway No. 253
about 5 miles from Greenville City and
was surveyed in May 1945
by J. J. Jarman

All corners have been pinned for monument.

Scale 1 inch = 100 feet