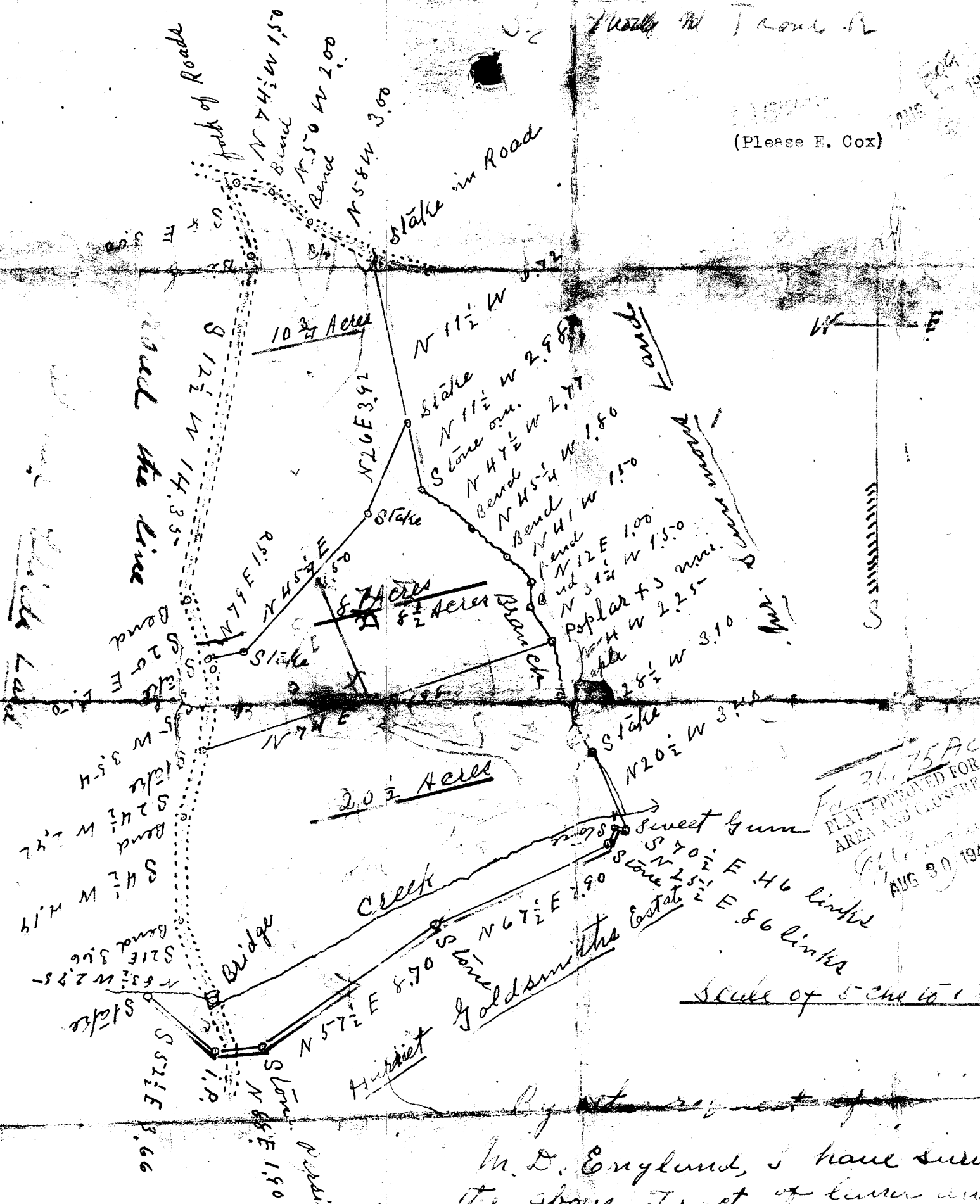


(Please E. Cox)



36.75 AC.
 PLAT APPROVED FOR
 AREA AND CLOSURE
 AUG 30 1944

Scale of 5 Chs to 1 inch

South Carolina
 Greenville County

England

By the request of
 M. D. England, I have surveyed
 the above Tract of land and
 divided the same into 3 Tracts
 as the above Plot represents
 Surveyed Mar. 23, 1928
 W. A. Hester
 Surveyor



13609 Filed This 22 day of Dec 1944
 And Recorded in Vol. 95 at 95

Ollie Farnworth