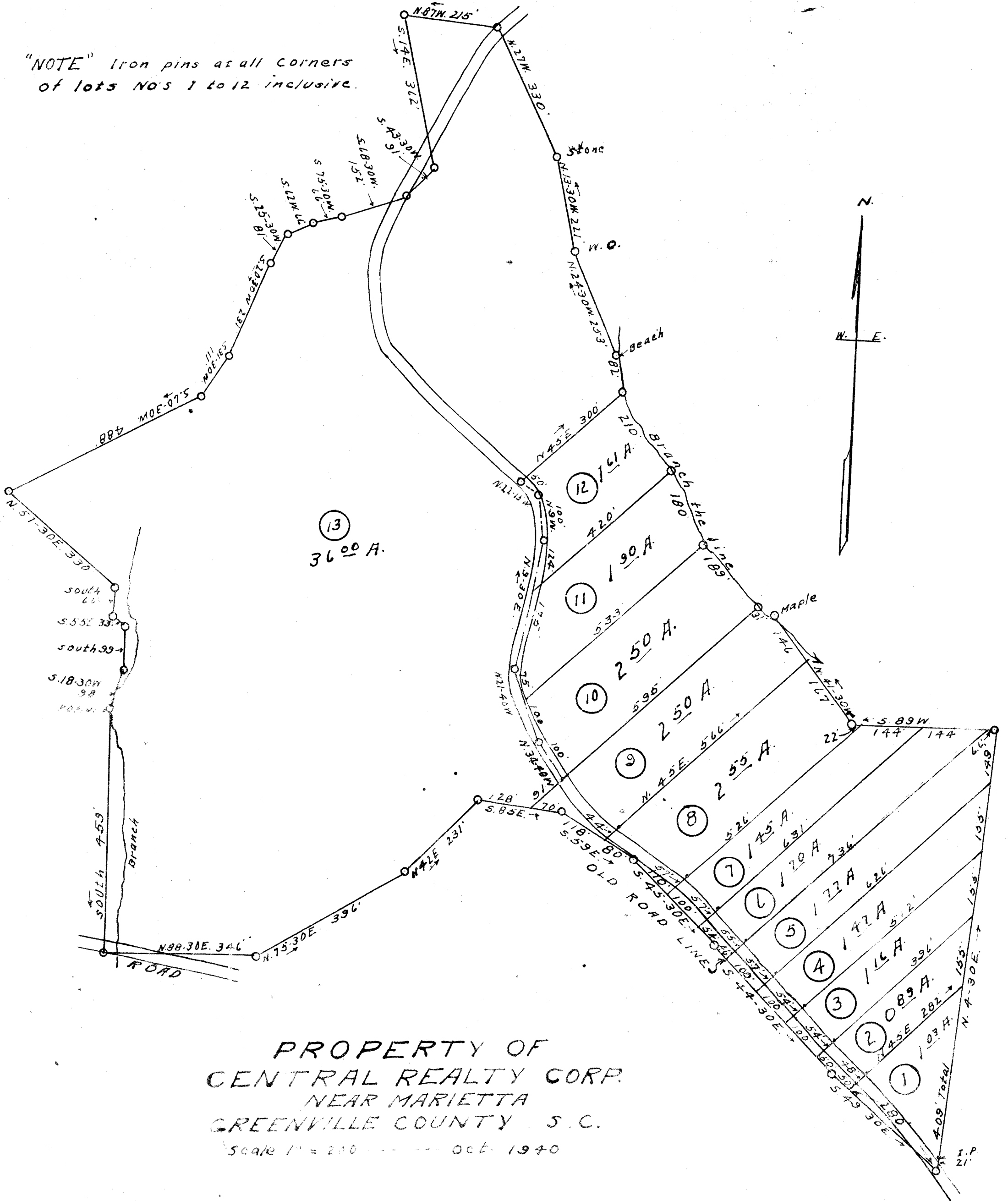


"NOTE" Iron pins at all corners of lots NO'S 1 to 12 inclusive.



PROPERTY OF  
CENTRAL REALTY CORP.  
NEAR MARIETTA  
GREENVILLE COUNTY S. C.

Scale 1" = 200' --- Oct. 1940

W. J. Riddle Surveyor

# 7301 Filed This 10 day of July 1944

And Recorded in Vol. 100 Page 39 at M.

Ollie Farnsworth

Register of Deeds Greenville County, S. C.