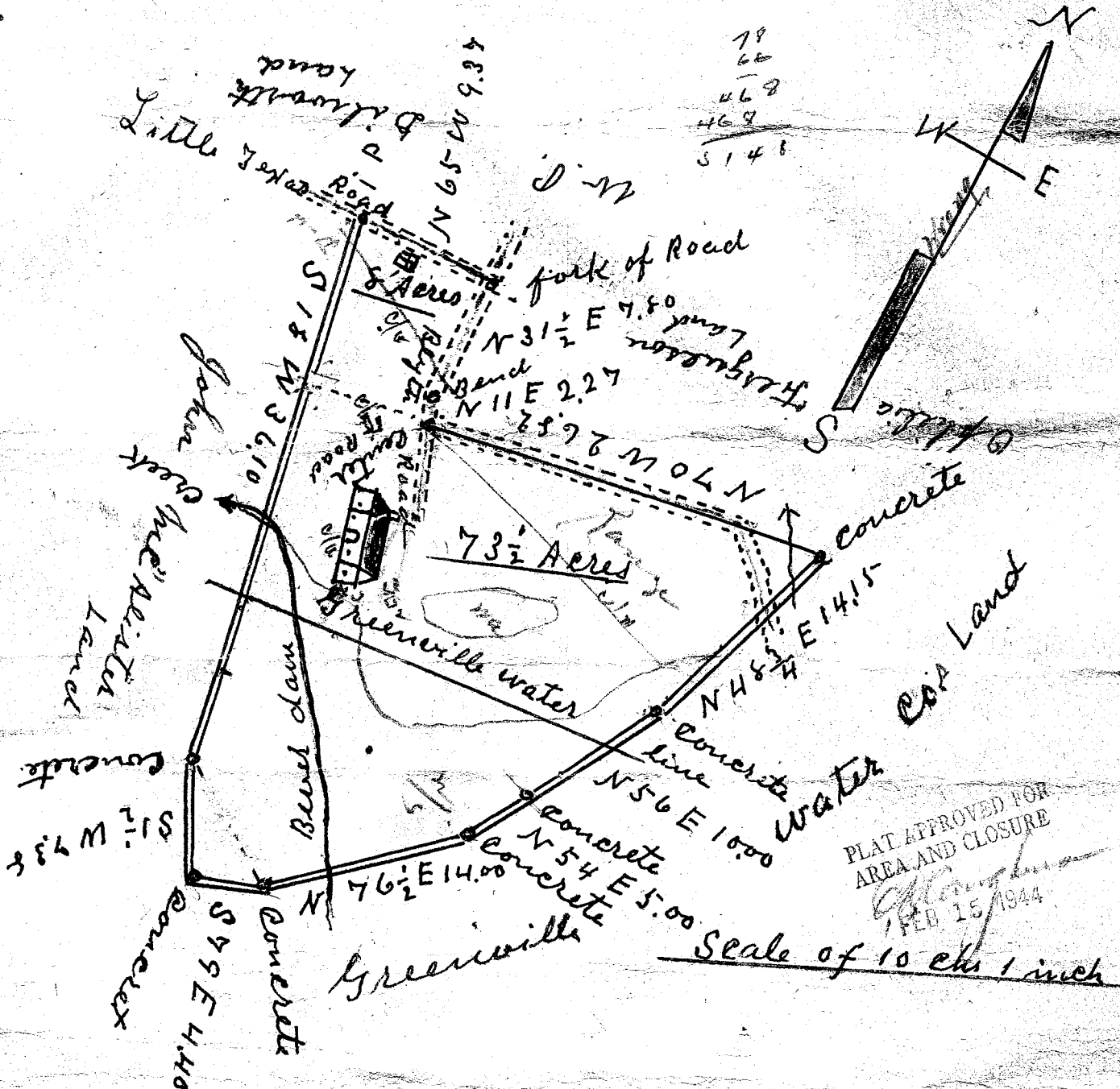


#114004

FEB 15 1944



19
60
468
469
5148

PLAT APPROVED FOR
AREA AND CLOSURE
FEB 15 1944

South Carolina }
Greenville County } By the request of
L. B. Hart I surveyed
the above 73 1/2 Acres
Dec. 13, 1938 and the
8 Acre Piece January 27th
1944 Total Acres 81 1/2 Acres
W. A. Hester L.S.



APR 7 1944 AM

3515
APR - 4 1944

36
66
216
216
432

#3515 FILED THIS 4 day of April 1944
And Recorded in 7 Page 187 of M.
Ollie Farnsworth
Register