

THE FEDERAL LAND BANK OF COLUMBIA.

TRACING SHEET FOR PLATS.

Lands of *T. T. Tollison*

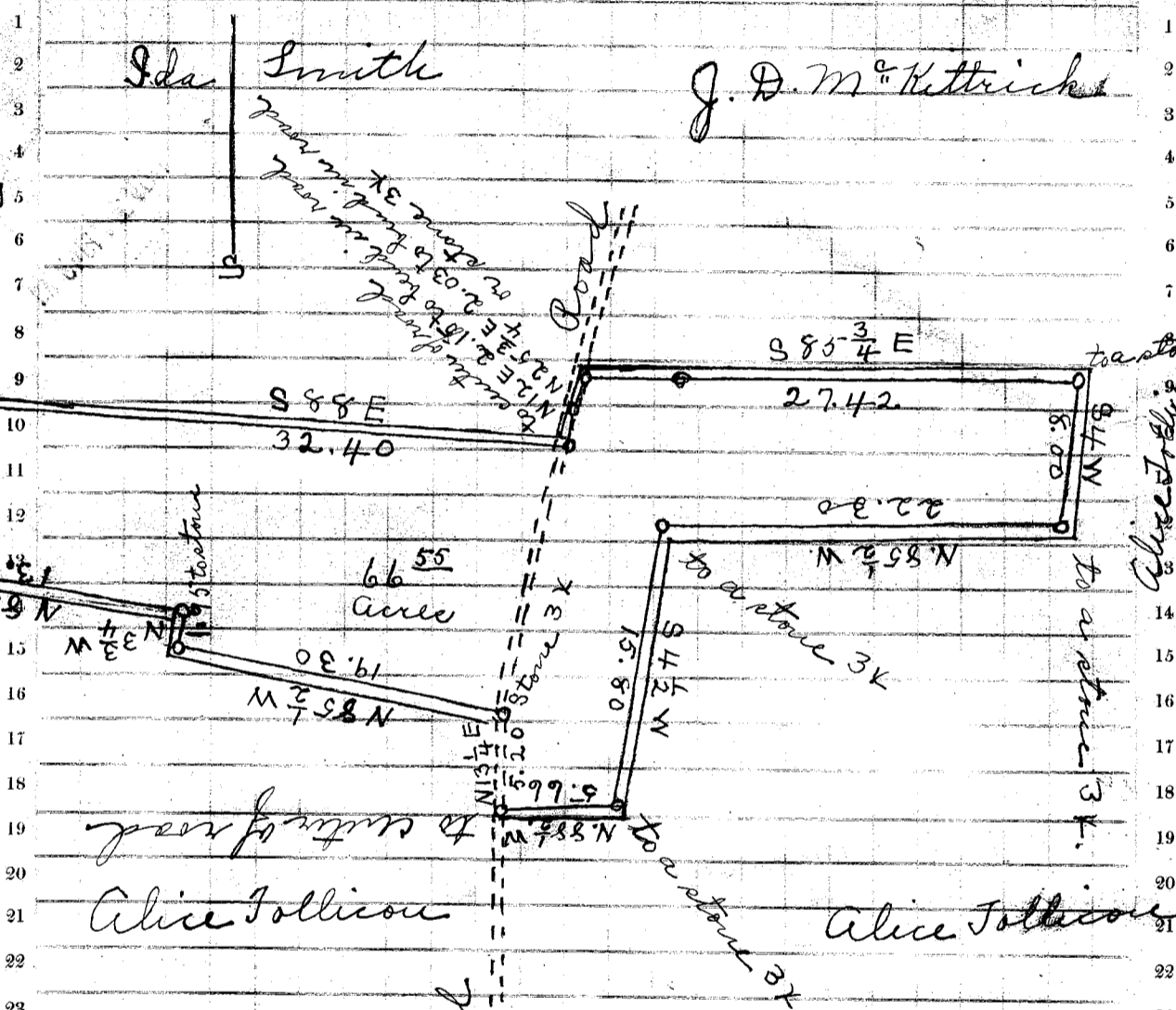
SEP 22 1918
112212

1 This sheet must be used for tracing plats of tracts of the lands abstracted in the chain of title. Place this sheet over the plat to be traced so that the same will appear as nearly in the center of the sheet as possible; then trace all lines, courses and distances. Always show all adjoining landowners and indicate the point of the compass and copy all legends or explanatory notes, showing the date of survey, purpose of the same and by whom made.

2 If the plat is too large to be traced on this sheet, make the tracing first on Sheet Q-1, and then reduce it on Sheet Q in the following manner: Assume that a certain corner on the tracing on Sheet Q-1 lies within Block 14-G. Refer to Sheet Q and locate this corner in corresponding Block 14-G. The next corner on Sheet Q-1 lies within Block 9-L. Refer to Sheet Q and locate this corner in the corresponding Block 9-L. Draw a line connecting these two points as the corresponding points on Sheet Q-1 are connected. So proceed around the perimeter of the plat of land as traced on Sheet Q-1, locating the corresponding corners on Sheet Q, and connecting the various corners so located until the point of departure is reached.

3 This sheet must be inserted in the abstract at its proper place, which is immediately following the instrument or proceedings which refers to the plat, of which this is a copy.

A B C D E F G H I J K L M N O P Q R S T U V W X Y



State of South Carolina
Greenville County

I have this day by request of Thomas T. Tollison taken his papers and made him a plat which the above shapes, marks and boundaries represent, this the 28 day of March, 1918.
James A. Adams, Surveyor.

A B C D E F G H I J K L M N O P Q R S T U V W X Y

#11294 Filed This 17 day of Nov 1918
And Recorded in Vol. 71 Page 135 at M.
Ollie Samworth
Register Mesne Conveyance Greenville County, S.C.