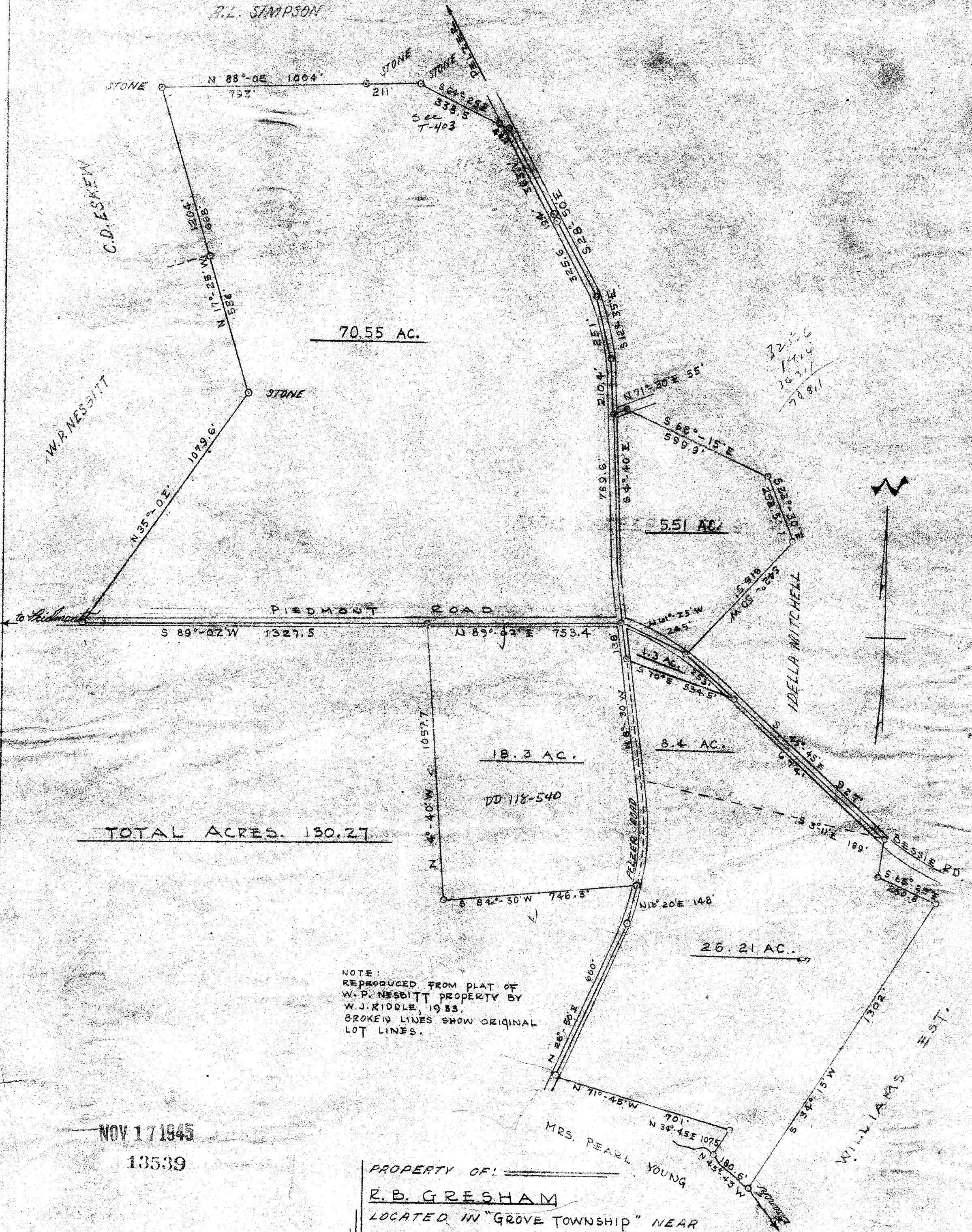


R.L. SIMPSON



70.55 AC.

5.51 AC.

18.3 AC.

8.4 AC.

26.21 AC.

TOTAL ACRES. 130.27

NOTE:
 REPRODUCED FROM PLAT OF
 W.P. NESSBITT PROPERTY BY
 W.J. RIDDLE, 1933.
 BROKEN LINES SHOW ORIGINAL
 LOT LINES.

NOV 17 1945
 13539

PROPERTY OF:
R.B. GRESHAM
 LOCATED IN "GROVE TOWNSHIP" NEAR
 PIEDMONT, GREENVILLE COUNTY, S.C.

PICKELL & PICKELL ENGRS.
 GREENVILLE, S.C.

SCALE: 1" = 300' DATED: NOV. 9 1945.