

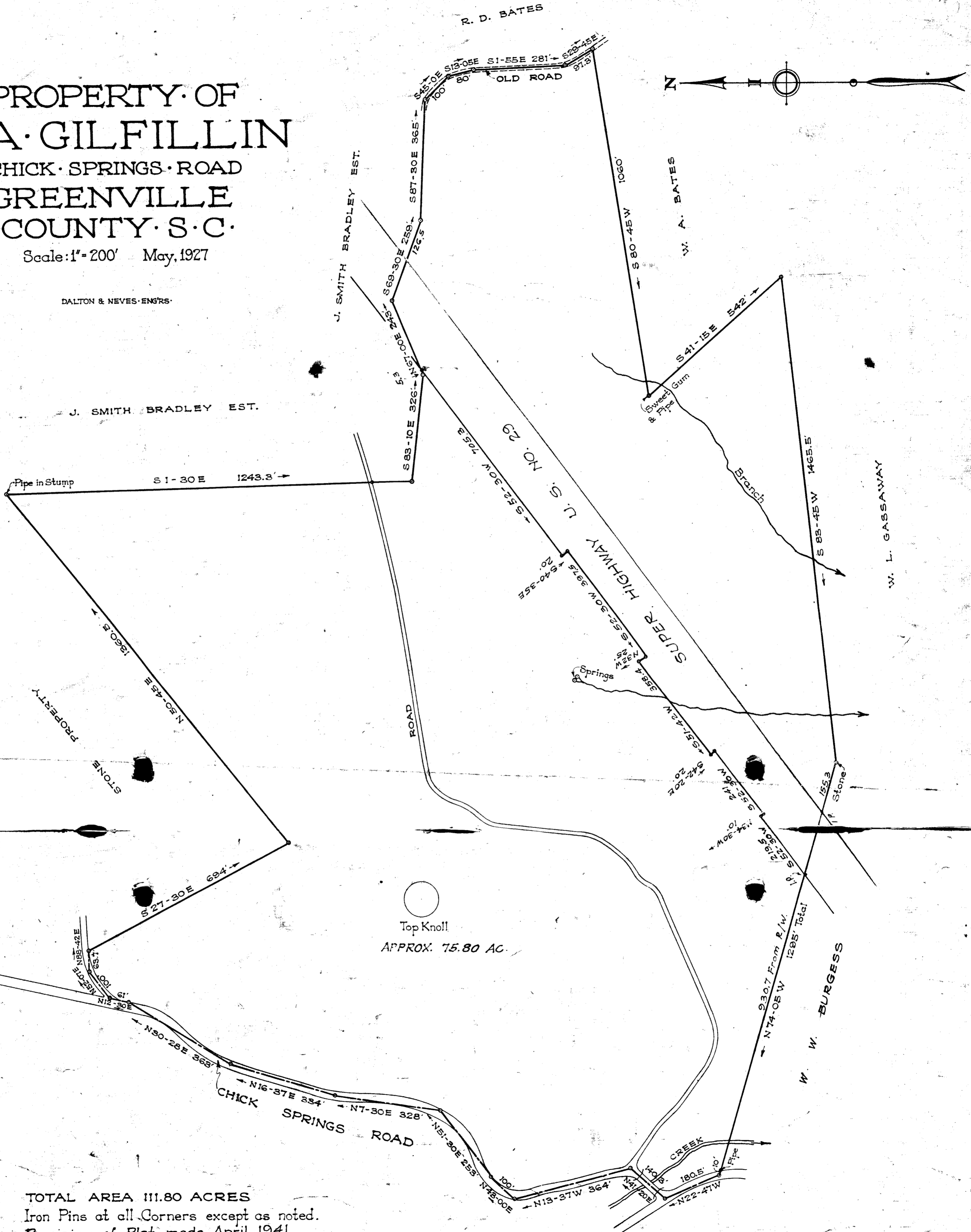
PROPERTY OF E. A. GILFILLIN

CHICK SPRINGS ROAD
GREENVILLE
COUNTY, S. C.

Scale: 1" = 200' May, 1927

DALTON & NEVES, ENGRS.

J. SMITH BRADLEY EST.



Top Knoll
APPROX. 75.80 AC.

TOTAL AREA 111.80 ACRES
Iron Pins at all Corners except as noted.
Revision of Plat made April 1941