

STATE OF SOUTH CAROLINA
COUNTY OF GREENVILLE,

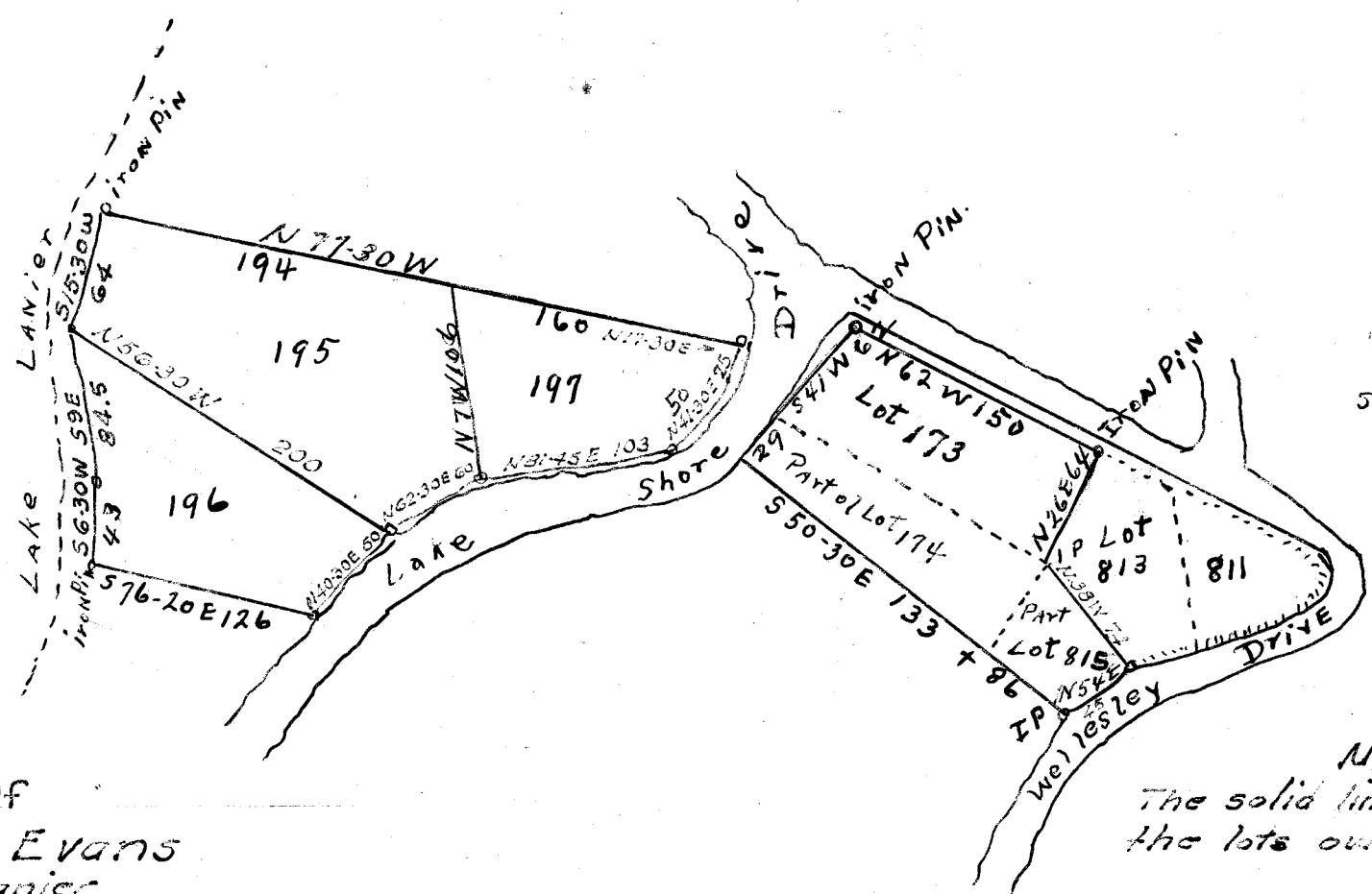
Scale: One inch equals Two Chains.
The above plat represents a tract of land, having the bearings, distances, bounds and an area of, to-wit, Three & 84/100's Acres. Surveyed for Mr. Edgar Boyce, May 16., 1944.

By: J. A. Fickens.

Plat recorded July 18th. 1944 # 7644.

Ollie Farnsworth, R. M. C.

Scale: one inch equals Two chains.



SCALE 1 inch = 100 feet.

Property Of
Charles E. Evans
on Lake Lanier
Greenville County, S. C.

July 15, 1941
S. B. Edwards Surveyor

#7733 Filed This 21 day of July 1944
And Recorded in Vol. 7 Page 295 at 1
Ollie Farnsworth
Register Mesne Conveyance Greenville County, S.C.

Note:
The solid lines represent
the lots owned by Mr. Evans