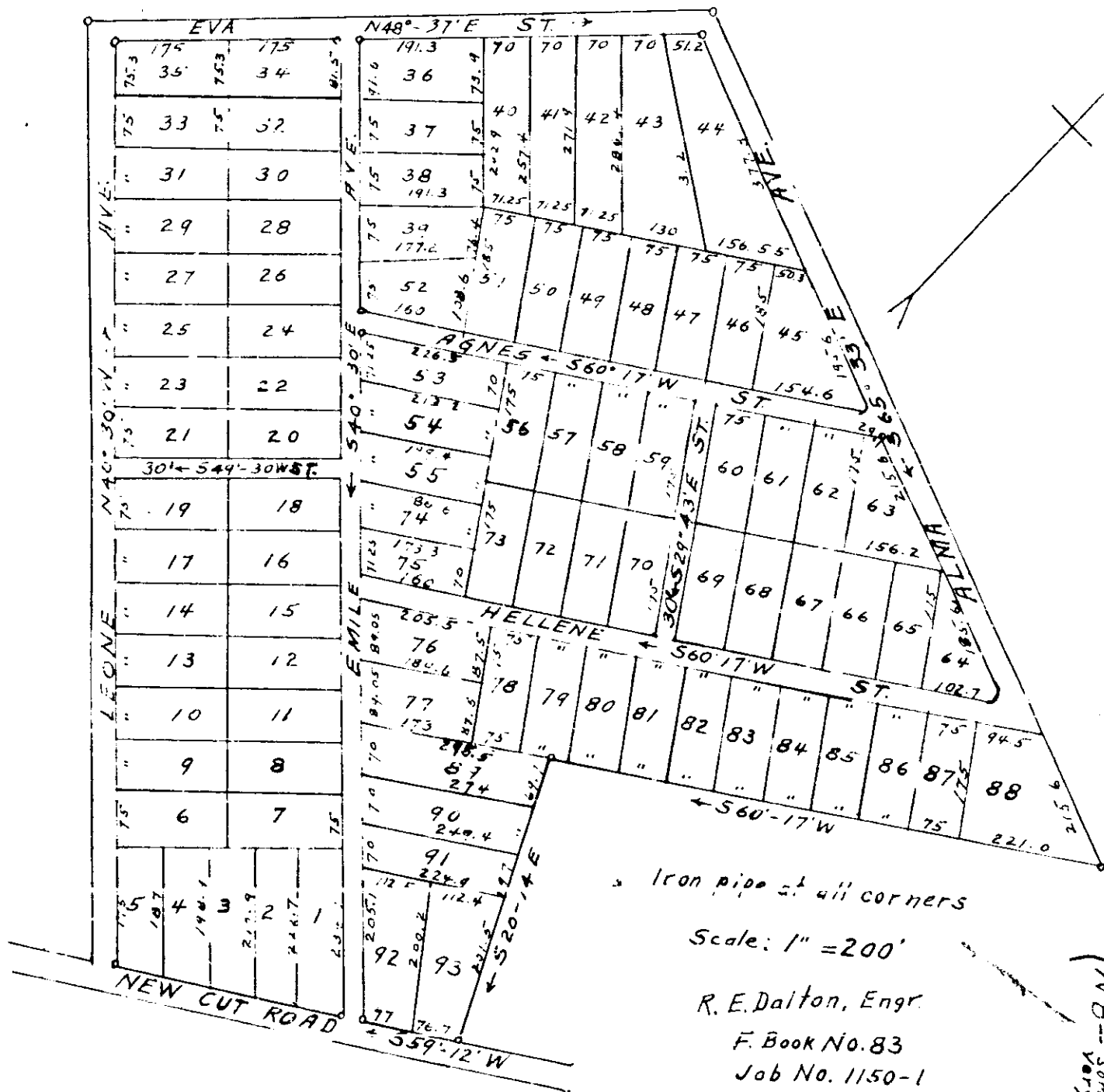


Beginning at a point in the center of the intersection of Leone Avenue and New Cut Road, and running thence along the center of Leone Avenue N 40-30 W approximately 1350 feet to the center of Eva Street; thence along the center of Eva Street N 48-37 E approximately 950 feet to the center of Alma Avenue; thence along the center of Alma Avenue S 65-33 E approximately 1350 feet to the southeast corner of lot No. 88; thence along the lines of lots No. 88 to No. 79, S 60-17 W approximately 850 feet to a point in the southern line of lot No. 79; thence along the eastern line of lots No. 89 through No. 93, S 20-14 E approximately 440 feet to the center of New Cut Road; thence along the center of New Cut Road S 59-12 W approximately 550 feet to the beginning corner.



**WESTVILLE TERRACE  
FORMERLY PROPERTY OF  
AMERICAN BANK & TRUST CO.**

ANNEXED TO  
GREATER GREENVILLE SEWER DIST.

AUGUST 1, 1939.  
Recorded July 17, 1941 # 10662.  
Ollie Furze with, P.M.C.

(NB-- some figures on Plat are)  
72

