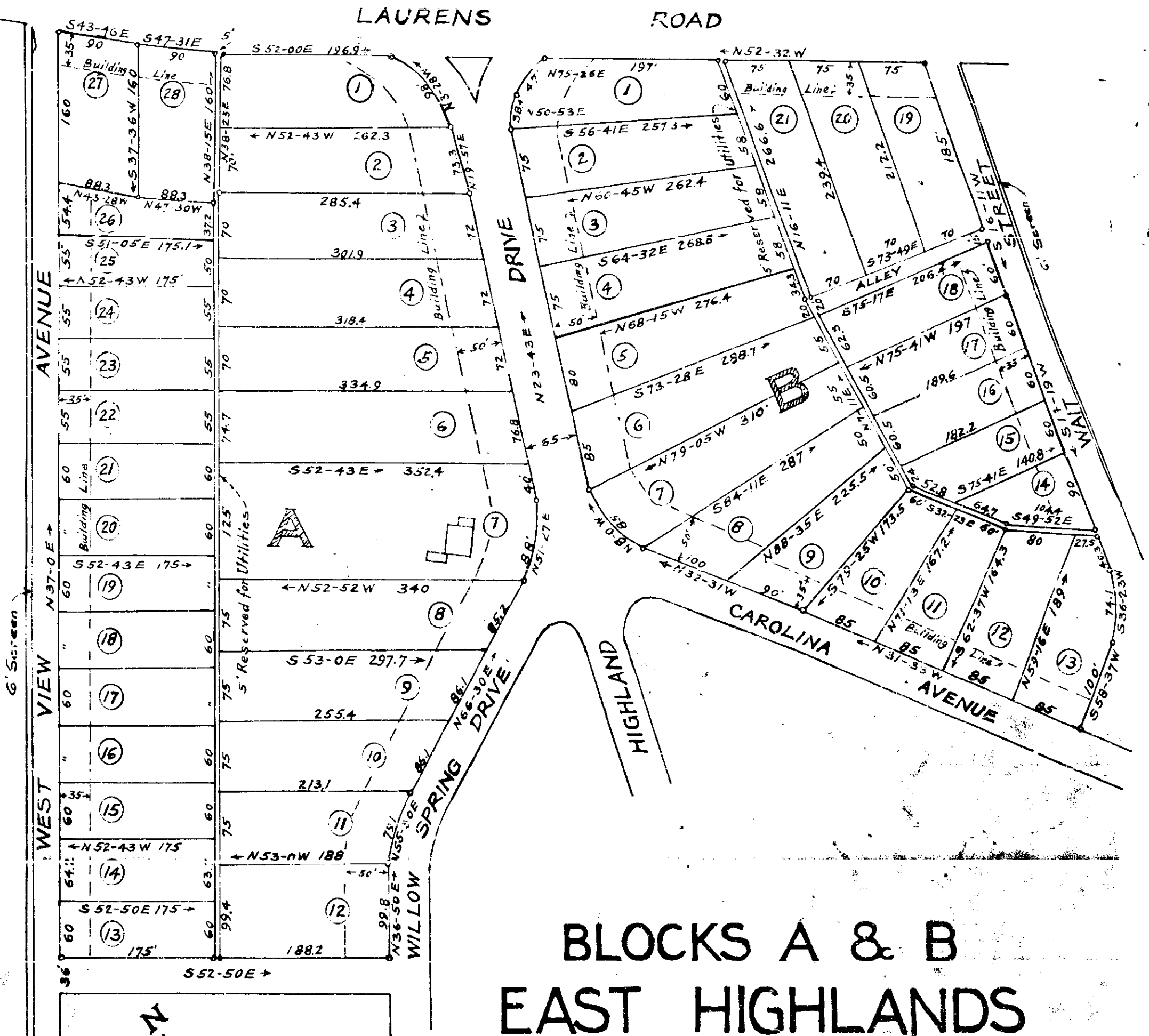


Blocks A and B are to be used for Residential Purposes only.
No Lot shall be subdivided to face in any other direction except as shown on this Plat.



BLOCKS A & B EAST HIGHLANDS ESTATES GREENVILLE CO. S. C.

Scale 1"=100'

April 1940

For Recorded
Plat of Blocks
A, B, and C,
See T. 13 Book
page 44.

Recorded April 1940
in Plat Book "K" pages 35 & 36
Office of R.M.C.
Greenville, Co. S.C.

Filed with 26 day of April 1940
and Book 137 Vol. K
Plat P. 35
Ollie Larnsworth
5437

DALTON & NEVES

Note: Iron Pins at all Corners