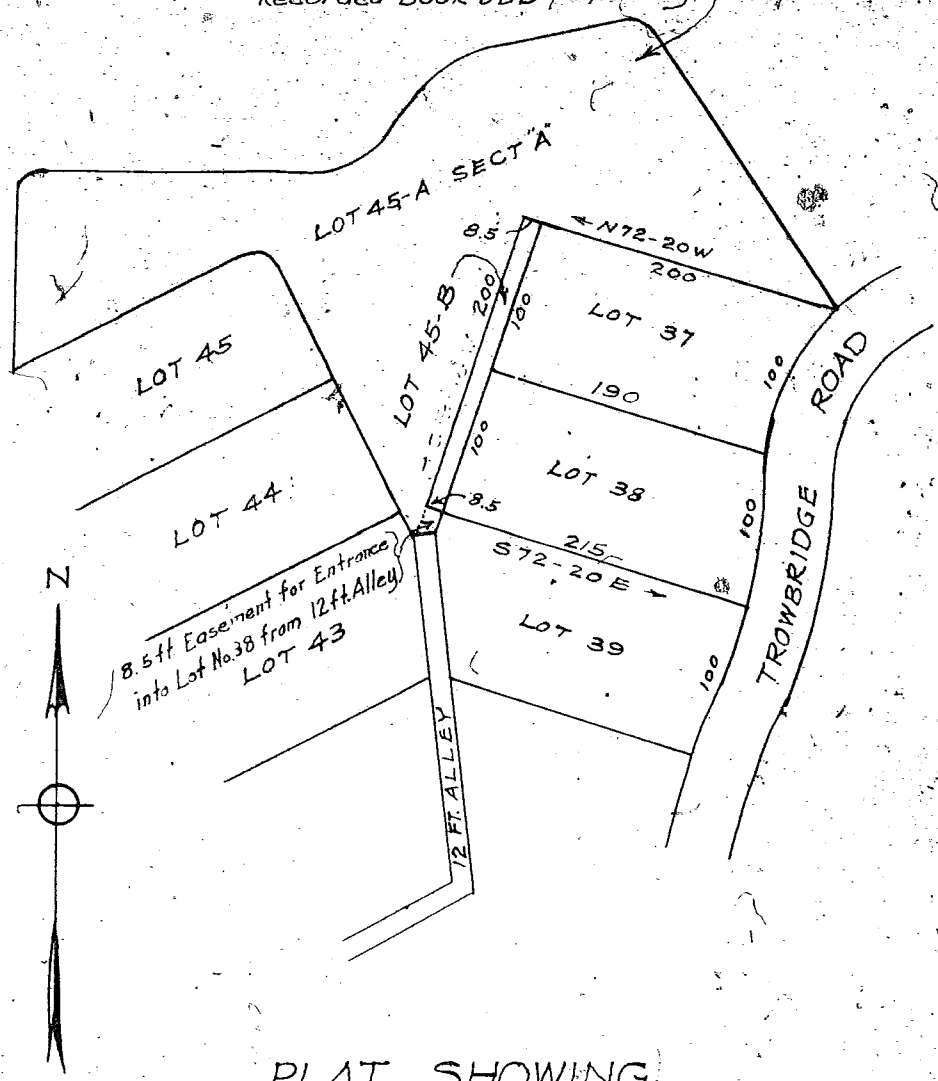


See Plat Paris Mountain Land Co
Recorded Book DDD page 902



PLAT SHOWING
LOTS 37 & 38 SECT. A
PARIS MOUNTAIN LAND CO.
AND LOT 45-B (BEING A PORTION OF LOT 45-A)
DEEDED BY ALESTER G. FURMAN TO
W. H. HOUSTON
GREENVILLE CO. S. C.
Scale 1" = 100 July 1939

DALTON & NEYBS