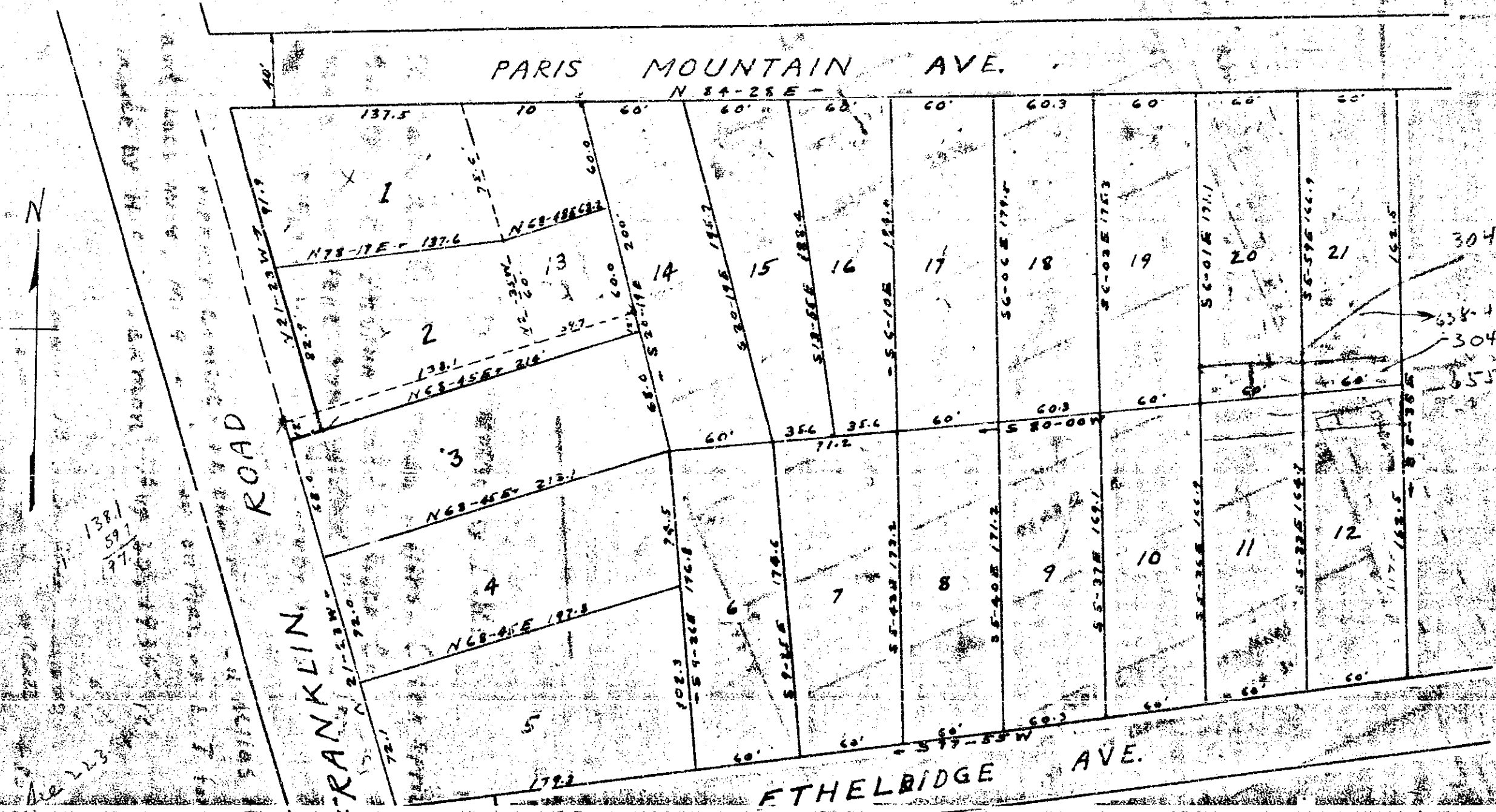


Plat Book I, Page 150



138.1
59.1
27.2

FRANKLIN ROAD

PARIS MOUNTAIN AVE.
N 84-25 E

FTHEBRIDGE AVE.

SUB-DIVISION
PERRY OF PROPERTY
Sons South Greenville S.C.
May 20, 1940

Surveyed by C.M. Hunter
Recorded by R.K. Campbell

Plat 20 May 1940
Ollie Sarnawath
7305

150