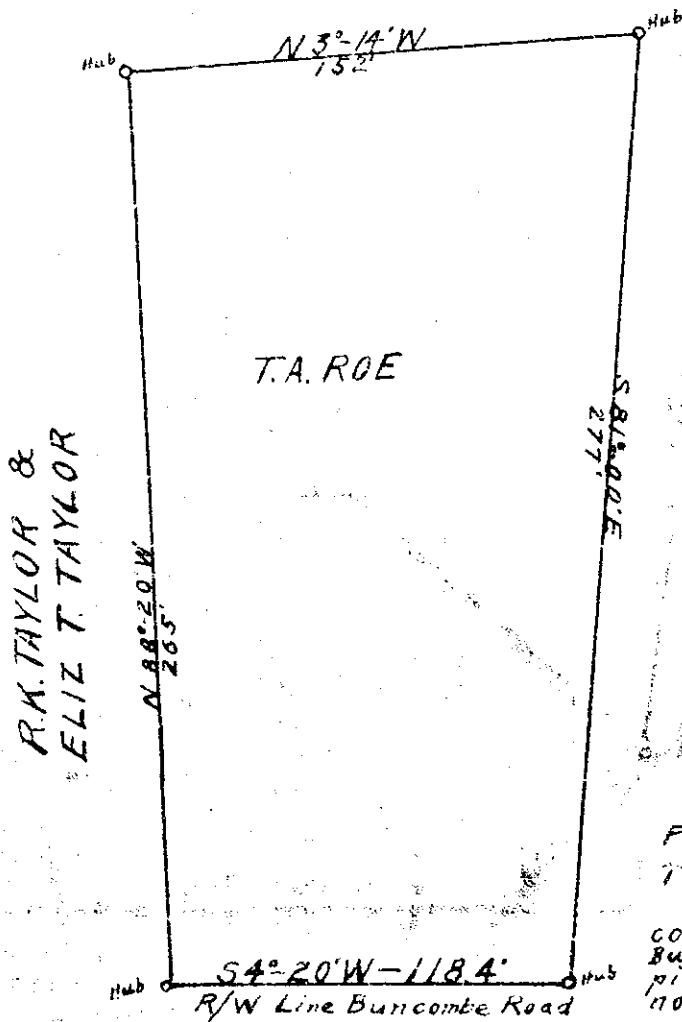


R. K. TAYLOR &
ELIZ. T. TAYLOR



PLAT OF LOT SURVEYED FOR
T. A. ROE

During construction of Buncombe road in 1935 the pins on Buncombe road were lost and the pins on the back corners could not be found.

The corners as shown are only approximately right. These corners were agreed upon verbally at the time of location by R. K. Taylor, H. Y. Thackston & T. A. Roe.

Scale 1" = 50'

Surveyed W. T. Meade for S. C. State Highway Dept 4/2/37

FILED THIS 5th DAY OF May 1937

68

Ollie Furnessworth

#5911 at 10:58 a.m.

87