

# Plat Book I, Page 44 A

PROPERTY

OF

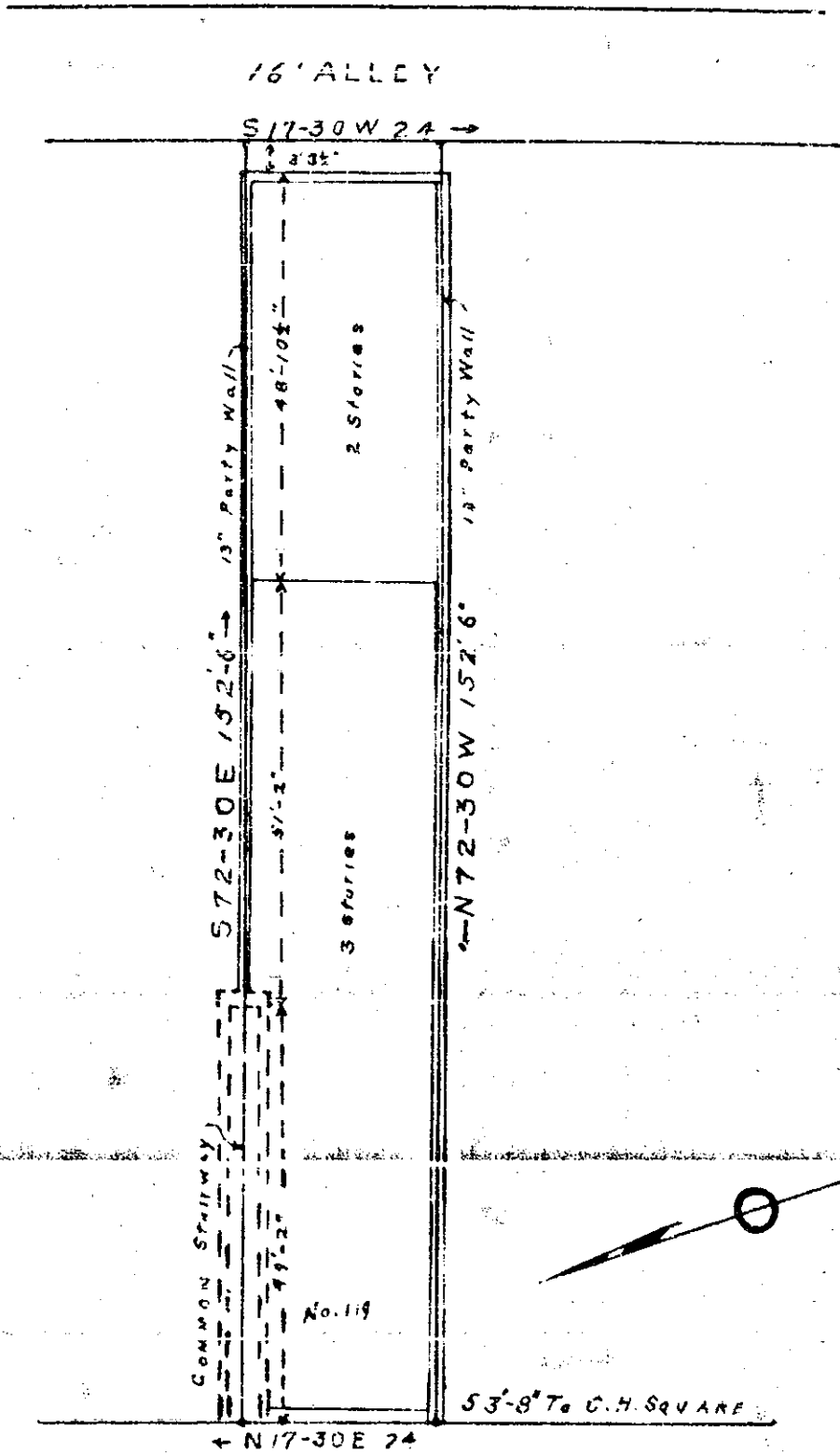
S.O. SKELTON

Surveyed by G.M.F. Jr.

Drawn by G.M.F. Jr.

Scale 1" = 20'

Date Sep. 10 - 1925



FILED THIS 5th DAY OF SEPTEMBER 1925  
 AND RECORDED IN VOL. 118 OF CHIEF CLERK'S OFFICE  
 AT 9:50 A.M.  
 Wm. J. Anderson  
 Chief Clerk

155

S. MAIN ST.

I hereby certify that this is a true and accurate survey of the above described property.  
 G.M. Furman, Jr.

44