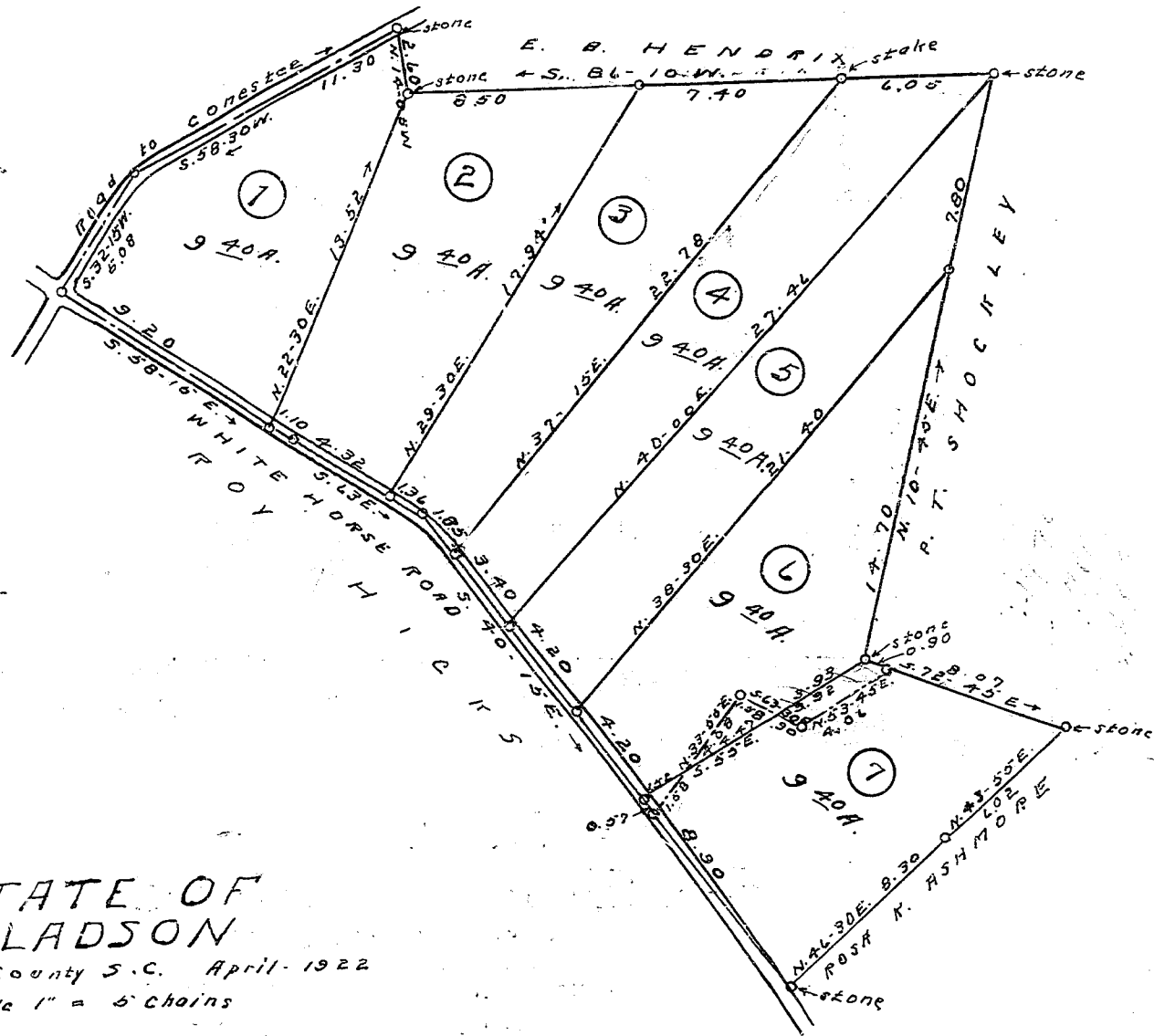


# PLAT BOOK PAGE 207

FILED THIS 27 DAY OF Aug 1925  
 AND RECORD IN V. 2d. OF

APR 287  
 L. B. Greenham  
 Register of Deeds  
 Greenville County, S. C.

"Note" Line between tracks Nos 6 and 7  
 Relocated and map revised July 18-1935  
 Dotted line represents new line W. J. R.



ESTATE OF  
 J. H. LADSON  
 Greenville County S. C. April-1922  
 Scale 1" = 5 chains

Surveyed and plotted by W. J. Riddle

JA

