

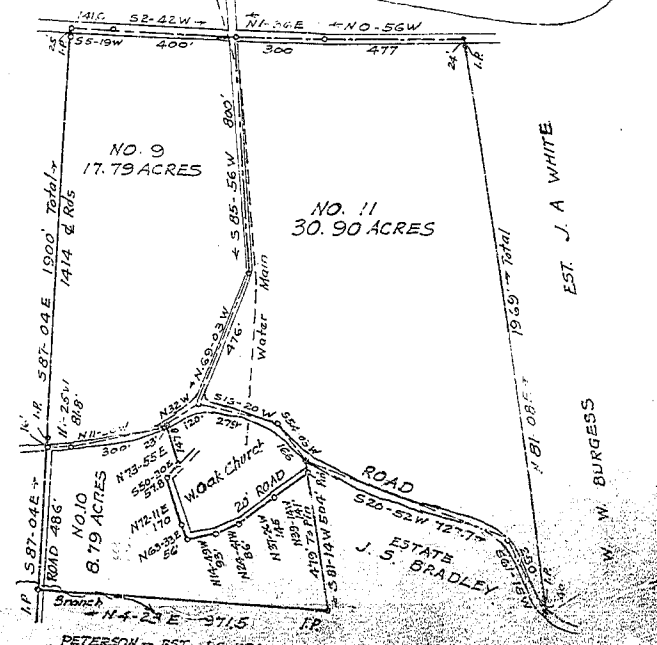
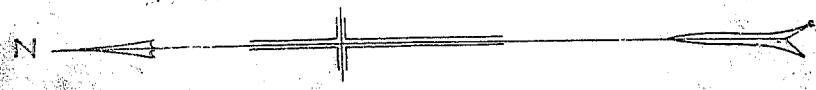
ESTATE OF  
T. E. GREEN  
GREENVILLE COUNTY S.C.

Scale 1"=300' Sept. 1934

R.E. DALTON ENGR.

Recorded Oct 2 1934 BY R.E.D.

**BAD COPY**



SEE PAGE 252

TRACT NO. 13  
See Page 252

SOLD  
A. B. GREEN  
21.00 ACRES

NO. 9  
17.79 ACRES

NO. 11  
30.90 ACRES

PETERSON - EST. J.S. BRADLEY